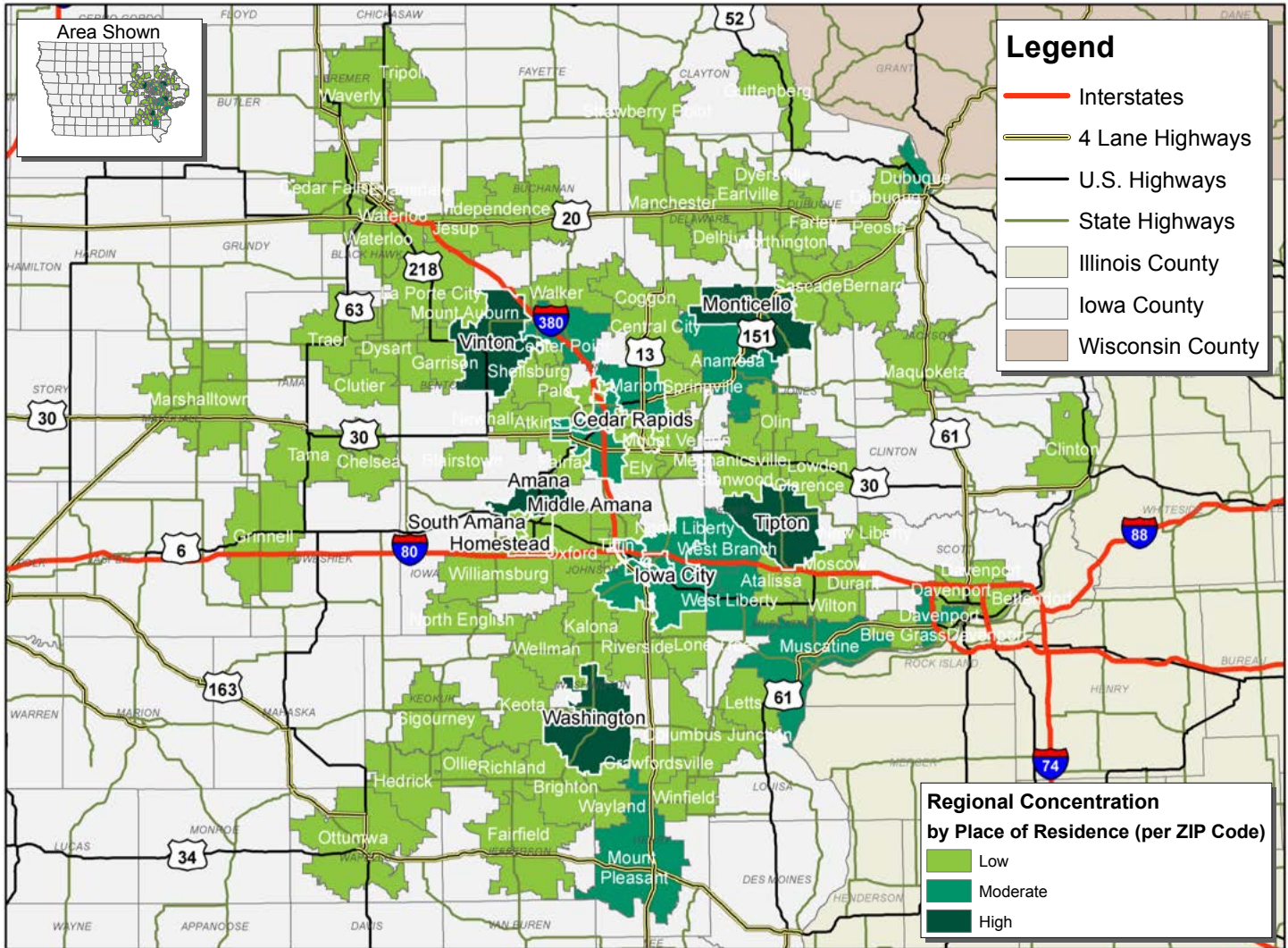


LABOR CHARACTERISTICS ADVANCED MANUFACTURING



CREATIVE CORRIDOR REGIONAL LABORSHED AREA

CONCENTRATION OF RESPONDENTS WITHIN THE LABORSHED AREA
WITH TRANSFERABLE EXPERIENCE/SKILLS BY PLACE OF RESIDENCE



Workers who have transferable experience/skills in the industry are currently commuting an average of 14 miles one way for work. Those who are likely to change/accept employment are willing to commute an average of 24 miles one way for the right employment opportunity.



FOR MORE INFORMATION REGARDING THE CREATIVE CORRIDOR REGIONAL LABORSHED, CONTACT:



Cedar Rapids Metro Alliance
501 First Street SE
Cedar Rapids, IA 52401
(319) 730-1425
Email: bcrowe@cedarrapids.org

Iowa City Area Development Group
316 E Court Street
Iowa City, IA 52240
(319) 354-3939
Email: dwilliamson@icadgroup.com
mnlte@icadgroup.com

iowascreativecorridor.com

LABOR CHARACTERISTICS



ADVANCED MANUFACTURING

ESTIMATED AVAILABLE LABOR PER OCCUPATIONAL CATEGORY:

BUSINESS OPERATIONS:

- Managers - 19,865
- Accountants - 5,198
- Bookkeeping Clerks - 10,935
- Customer Service Reps - 8,344
- Employment, Recruitment, Placement & Labor Relations Specialists and Human Resources Assistants - 3,753
- Purchasing Agents - 758
- Sales Reps - 387
- Secretaries & Administrative Support Workers - 29,843
- Shipping & Receiving Clerks - 5,198
- Weighers, Measurers & Samplers - 1,128

PRODUCTION:

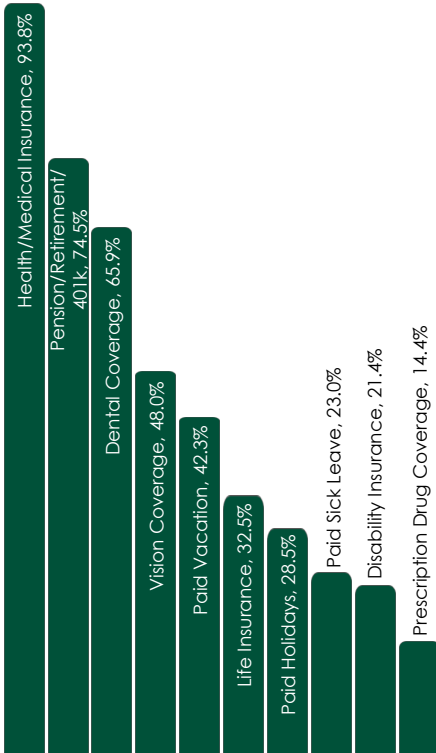
- Managers - 3,365
- Supervisors - 4,088
- Assemblers & Fabricators - 7,107
- Electricians - 3,348
- Engineering Technicians - 5,233
- Engineers & Drafters - 13,275
- Inspectors - 3,718
- Machinists & Machine Operators - 15,126
- Mechanics, Maintenance & Repair Workers - 4,528
- Millwrights - 384
- Painters, Construction & Maintenance - 1,868
- Production Workers & Helpers - 15,410
- Sheet Metal Workers - 1,130
- Water & Liquid Waste Treatment Plant & System Operators - 1,126

MATERIAL MOVERS:

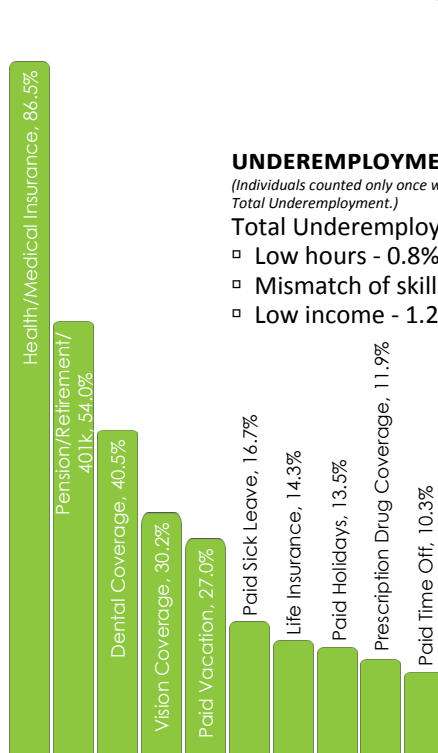
- Supervisors - 760
- Forklift Operators - 755
- Laborers & Material Movers, Hand - 4,090
- Transportation Inspectors & Workers - 1,515
- Truck Drivers - 12,803

**AN ESTIMATED TOTAL OF
185,038 PEOPLE IN THE LABORSHED AREA**

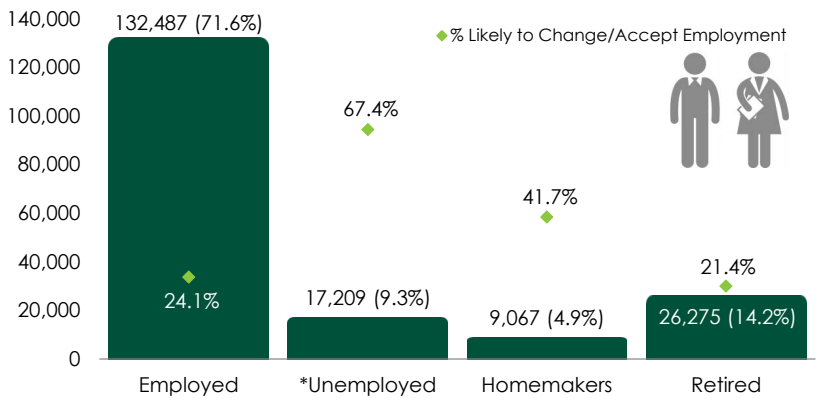
CURRENT BENEFITS:



DESIRED BENEFITS:



ESTIMATED TOTAL BY EMPLOYMENT STATUS (PERCENTAGE):



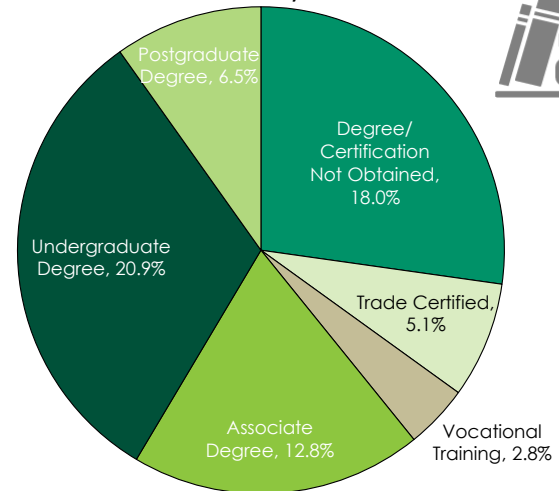
*Employment status is self-identified by the survey respondent. The unemployment percentage does not reflect the unemployment rate published by the U.S. Bureau of Labor Statistics, which applies a stricter definition.

EMPLOYMENT STATS:

- 66.9% paid an hourly wage
- 78.2% are/were employed full-time
- 6.5% are/were self-employed
- 11.2% are/were employed part-time
- 10.5% hold two or more jobs
- Currently working an average of 43 hours/week

EDUCATIONAL LEVEL:

(66.1% HAVE AN EDUCATION BEYOND HIGH SCHOOL)



UNDEREMPLOYMENT:

(Individuals counted only once when estimating Total Underemployment.)

Total Underemployment - 2.8%

- Low hours - 0.8%
- Mismatch of skills - 1.2%
- Low income - 1.2%

TOP JOB SEARCH RESOURCES:

(For those seeking employment opportunities, by use.)

- Internet - 66.2%
 - www.monster.com
 - www.corridorcareers.com
 - www.indeed.com
 - www.iowajobs.org
- Local/Regional Newspapers - 33.4%
 - *The Gazette* - Cedar Rapids
- Networking through friends, family or acquaintances - 18.9%
- IowaWORKS Centers - 14.4%



WORKPLACE FLEXIBILITY:

(by percent of interest)

- Job teams - 73.4%
- Cross-training - 71.3%
- Job sharing - 42.0%
- Varied shifts - 30.8%
- Temporary work - 49.3%
- Seasonal work - 45.1%



LABOR CHARACTERISTICS - WAGES

ADVANCED MANUFACTURING

OCCUPATION	OCCUPATIONAL CODE	MEAN WAGE	ENTRY WAGE	EXPERIENCED WAGE	MEDIAN WAGE	MEAN ANNUAL SALARY
Assemblers and Fabricators, All Other	51-2099	\$ 15.71	\$ 10.45	\$ 18.34	\$ 15.78	\$ 32,675
Computer Numerically Controlled Machine Tool Programmers, Metal and Plastic	51-4012	\$ 27.90	\$ 21.40	\$ 31.15	\$ 26.61	\$ 58,028
Computer-Controlled Machine Tool Operators, Metal and Plastic	51-4011	\$ 20.09	\$ 16.57	\$ 21.84	\$ 19.37	\$ 41,778
Cutting, Punching, and Press Machine Setters, Operators, and Tenders, Metal and Plastic	51-4031	\$ 15.78	\$ 11.97	\$ 17.68	\$ 15.30	\$ 32,818
Drilling and Boring Machine Tool Setters, Operators, and Tenders, Metal and Plastic	51-4032	\$ 18.68	\$ 15.83	\$ 20.11	\$ 18.54	\$ 38,860
Electrical and Electronics Drafters	17-3012	\$ 29.34	\$ 23.62	\$ 32.21	\$ 28.32	\$ 61,037
Electrical and Electronics Engineering Technicians	17-3023	\$ 30.05	\$ 22.78	\$ 33.68	\$ 30.68	\$ 62,499
Electrical and Electronics Repairers, Commercial and Industrial Equipment	49-2094	\$ 25.34	\$ 17.77	\$ 29.12	\$ 25.61	\$ 52,704
Electrical Engineers	17-2071	\$ 42.87	\$ 32.29	\$ 48.16	\$ 42.42	\$ 89,164
Electricians	47-2111	\$ 27.68	\$ 17.17	\$ 32.94	\$ 28.39	\$ 57,575
Electronics Engineers, Except Computer	17-2072	\$ 37.97	\$ 29.93	\$ 41.99	\$ 39.01	\$ 78,979
Engineering Technicians, Except Drafters, All Other	17-3029	\$ 24.90	\$ 20.14	\$ 27.28	\$ 23.90	\$ 51,794
Engineers, All Other	17-2199	\$ 33.36	\$ 19.10	\$ 40.50	\$ 33.81	\$ 69,397
First-Line Supervisors of Helpers, Laborers, and Material Movers, Hand	53-1021	\$ 19.74	\$ 15.32	\$ 21.94	\$ 18.37	\$ 41,051
First-Line Supervisors of Mechanics, Installers, and Repairers	49-1011	\$ 29.01	\$ 18.58	\$ 34.22	\$ 28.66	\$ 60,333
First-Line Supervisors of Production and Operating Workers	51-1011	\$ 28.81	\$ 19.10	\$ 33.67	\$ 27.86	\$ 59,929
First-Line Supervisors of Transportation and Material-Moving Machine Operators	53-1031	\$ 25.42	\$ 18.29	\$ 28.98	\$ 25.49	\$ 52,869
Grinding, Lapping, Polishing, and Buffing Machine Tool Setters, Operators, and Tenders, Metal and Plastic	51-4033	\$ 16.21	\$ 10.04	\$ 19.30	\$ 15.09	\$ 33,719
Health and Safety Engineers, Except Mining Safety Engineers and Inspectors	17-2111	\$ 37.66	\$ 29.74	\$ 41.62	\$ 37.47	\$ 78,329
Heavy and Tractor-Trailer Truck Drivers	53-3032	\$ 19.79	\$ 13.16	\$ 23.10	\$ 18.70	\$ 41,158
Helpers--Installation, Maintenance, and Repair Workers	49-9098	\$ 13.42	\$ 9.76	\$ 15.24	\$ 13.51	\$ 27,904
Helpers--Production Workers	51-9198	\$ 13.04	\$ 10.23	\$ 14.44	\$ 11.94	\$ 27,123
Industrial Engineering Technicians	17-3026	\$ 23.77	\$ 19.24	\$ 26.04	\$ 23.37	\$ 49,451
Industrial Engineers	17-2112	\$ 40.64	\$ 29.11	\$ 46.41	\$ 37.25	\$ 84,536
Industrial Machinery Mechanics	49-9041	\$ 27.57	\$ 19.17	\$ 31.78	\$ 28.08	\$ 57,351
Industrial Production Managers	11-3051	\$ 44.77	\$ 31.11	\$ 51.60	\$ 42.74	\$ 93,126
Industrial Truck and Tractor Operators	53-7051	\$ 17.58	\$ 13.77	\$ 19.49	\$ 17.48	\$ 36,566
Inspectors, Testers, Sorters, Samplers, and Weighers	51-9061	\$ 20.01	\$ 11.22	\$ 24.40	\$ 17.88	\$ 41,613
Installation, Maintenance, and Repair Workers, All Other	49-9099	\$ 19.58	\$ 11.81	\$ 23.47	\$ 19.09	\$ 40,734
Lathe and Turning Machine Tool Setters, Operators, and Tenders, Metal and Plastic	51-4034	\$ 18.25	\$ 13.93	\$ 20.41	\$ 16.45	\$ 37,952
Light Truck or Delivery Services Drivers	53-3033	\$ 16.75	\$ 9.82	\$ 20.22	\$ 15.49	\$ 34,840
Machinists	51-4041	\$ 21.09	\$ 15.44	\$ 23.91	\$ 20.35	\$ 43,863
Maintenance and Repair Workers, General	49-9071	\$ 20.22	\$ 12.45	\$ 24.11	\$ 19.12	\$ 42,064
Maintenance Workers, Machinery	49-9043	\$ 21.25	\$ 16.01	\$ 23.88	\$ 20.23	\$ 44,208
Mechanical Drafters	17-3013	\$ 28.75	\$ 17.64	\$ 34.31	\$ 26.91	\$ 59,808
Mechanical Engineering Technicians	17-3027	\$ 24.84	\$ 16.08	\$ 29.22	\$ 25.17	\$ 51,668
Mechanical Engineers	17-2141	\$ 38.94	\$ 25.60	\$ 45.61	\$ 35.82	\$ 80,999
Metal Workers and Plastic Workers, All Other	51-4199	\$ 18.70	\$ 10.60	\$ 22.75	\$ 17.83	\$ 38,896
Milling and Planing Machine Setters, Operators, and Tenders, Metal and Plastic	51-4035	\$ 19.29	\$ 14.90	\$ 21.48	\$ 19.81	\$ 40,114
Millwrights	49-9044	\$ 25.88	\$ 18.72	\$ 29.46	\$ 26.04	\$ 53,823
Molding, Coremaking, and Casting Machine Setters, Operators, and Tenders, Metal and Plastic	51-4072	\$ 14.44	\$ 8.38	\$ 17.47	\$ 11.88	\$ 30,032
Multiple Machine Tool Setters, Operators, and Tenders, Metal and Plastic	51-4081	\$ 15.32	\$ 12.39	\$ 16.79	\$ 14.71	\$ 31,872
Plating and Coating Machine Setters, Operators, and Tenders, Metal and Plastic	51-4193	\$ 15.31	\$ 13.16	\$ 16.39	\$ 15.26	\$ 31,852
Prepress Technicians and Workers	51-5111	\$ 21.21	\$ 18.96	\$ 22.33	\$ 21.82	\$ 44,107
Production Workers, All Other	51-9199	\$ 16.40	\$ 11.58	\$ 18.81	\$ 16.34	\$ 34,109
Rolling Machine Setters, Operators, and Tenders, Metal and Plastic	51-4023	\$ 16.24	\$ 12.46	\$ 18.13	\$ 15.83	\$ 33,784
Structural Metal Fabricators and Fitters	51-2041	\$ 17.74	\$ 15.36	\$ 18.93	\$ 17.61	\$ 36,895
Team Assemblers	51-2092	\$ 16.58	\$ 12.39	\$ 18.67	\$ 16.44	\$ 34,479
Tool and Die Makers	51-4111	\$ 24.14	\$ 19.48	\$ 26.47	\$ 23.69	\$ 50,209
Transportation, Storage, and Distribution Managers	11-3071	\$ 38.33	\$ 24.74	\$ 45.13	\$ 37.71	\$ 79,731
Welders, Cutters, Solderers, and Brazers	51-4121	\$ 18.15	\$ 14.25	\$ 20.10	\$ 17.56	\$ 37,743
Welding, Soldering, and Brazing Machine Setters, Operators, and Tenders	51-4122	\$ 16.33	\$ 13.08	\$ 17.96	\$ 16.61	\$ 33,967

The 2017 Iowa Wage data for IWD Region 10 (which includes: Benton, Cedar, Iowa, Johnson, Jones, Linn & Washington counties) was produced by the Labor Force & Occupational Analysis Bureau to provide communities local information on wages by occupation. The source of the wage and employment data is based on the May 2016 OES estimates. Additional occupational wage and employment data can be found at <https://www.iowaworkforcedevelopment.gov/iawagereport>.

Balance of data compiled by Iowa Workforce Development using Laborshed data released in 2016.