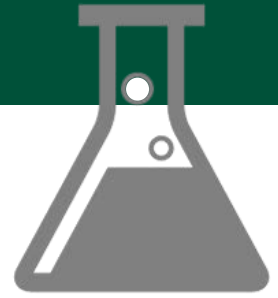


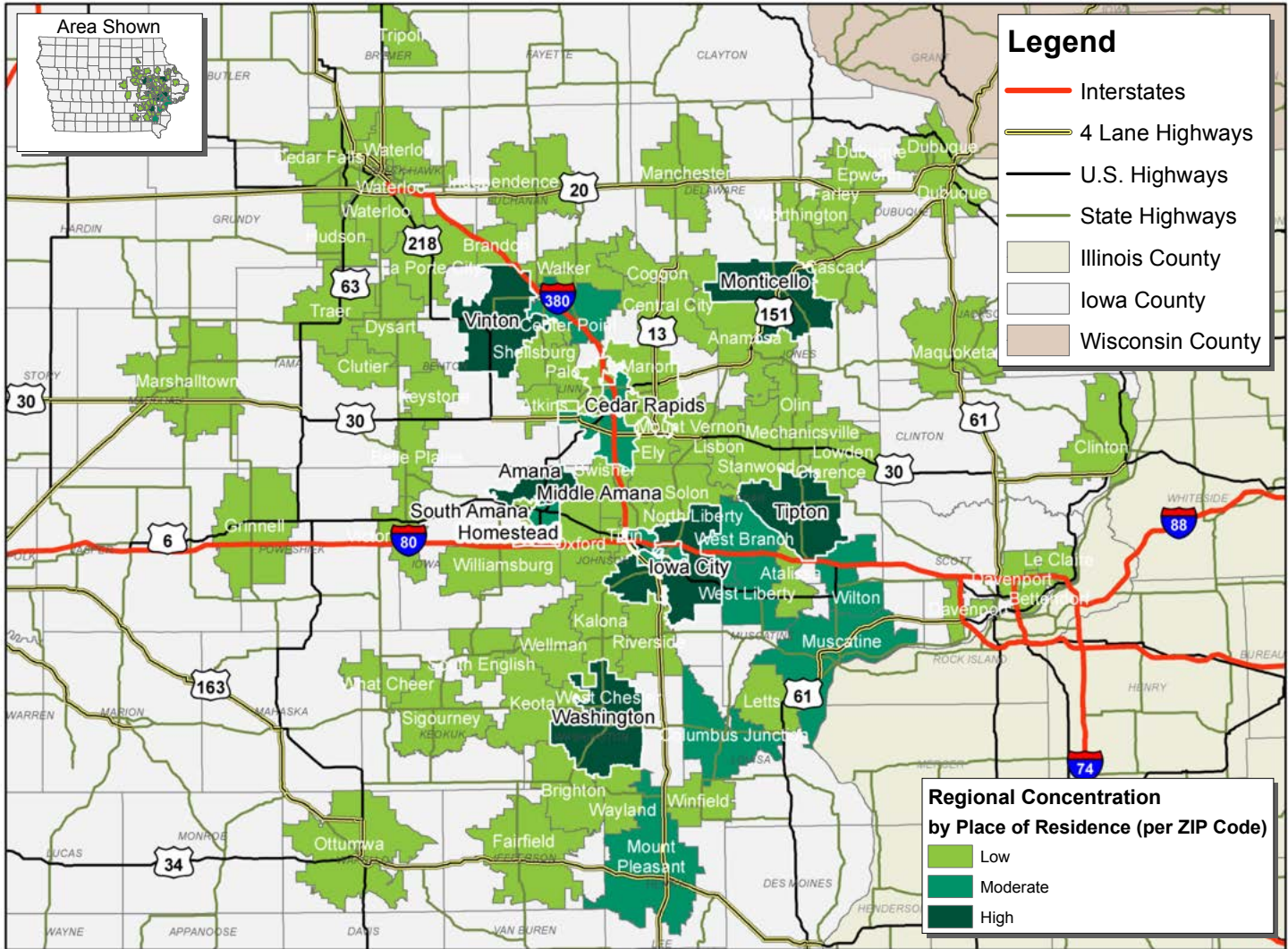
LABOR CHARACTERISTICS

BIOTECHNOLOGY

CREATIVE CORRIDOR REGIONAL LABORSHED AREA



CONCENTRATION OF RESPONDENTS WITHIN THE LABORSHED AREA
WITH TRANSFERABLE EXPERIENCE/SKILLS BY PLACE OF RESIDENCE



Workers who have transferable experience/skills in the industry are currently commuting an average of 13 miles one way for work. Those who are likely to change/accept employment are willing to commute an average of 25 miles one way for the right employment opportunity.



FOR MORE INFORMATION REGARDING THE CREATIVE CORRIDOR REGIONAL LABORSHED, CONTACT:



Cedar Rapids Metro Alliance
501 First Street SE
Cedar Rapids, IA 52401
(319) 730-1425
Email: bcrowe@cedarrapids.org

Iowa City Area Development Group
316 E Court Street
Iowa City, IA 52240
(319) 354-3939
Email: dwilliamson@icadgroup.com
mnlte@icadgroup.com

iowascreativecorridor.com

LABOR CHARACTERISTICS



BIOTECHNOLOGY

ESTIMATED AVAILABLE LABOR PER OCCUPATIONAL CATEGORY:

BUSINESS OPERATIONS:

- Managers - 22,104
- Supervisors - 1,883

HEALTHCARE

- Dietitians - 1,879
- Health Technologists - 764
- Healthcare Support Workers - 394
- Medical Laboratory Technicians - 2,255

PRODUCTION:

- Supervisors - 4,113
- Food Science Technicians - 1,884
- Agricultural Workers - 763
- Bakers - 1,140
- Butchers - 1,138
- Chemical Technicians - 388
- Conservation Scientists - 1,145
- Cutting Machine Operators - 516
- Engineering Technicians - 3,370
- Engineers - 8,582
- Environmental Engineering Technicians - 778
- Farmworkers - 758
- Food Batchmakers - 385

- Market Research Analysts - 2,253
- Operations Research Analysts - 415
- Medical Scientists - 785
- Pharmacy Technicians - 1,141
- Physicians - 2,626
- Registered Nurses - 19,873
- Veterinary techs - 362
- Industrial Engineers - 387
- Inspectors - 3,742
- Maintenance and Repair Workers - 13,421
- Meat, Poultry, and Fish Cutters and Trimmers - 510
- Microbiologists - 389
- Millwrights - 373
- Nuclear Technicians - 400
- Plant and System Operators - 1,509
- Production Workers - 14,165
- Research Assistants - 782
- Social Science Technicians - 2,998
- Still Machine Operators - 395

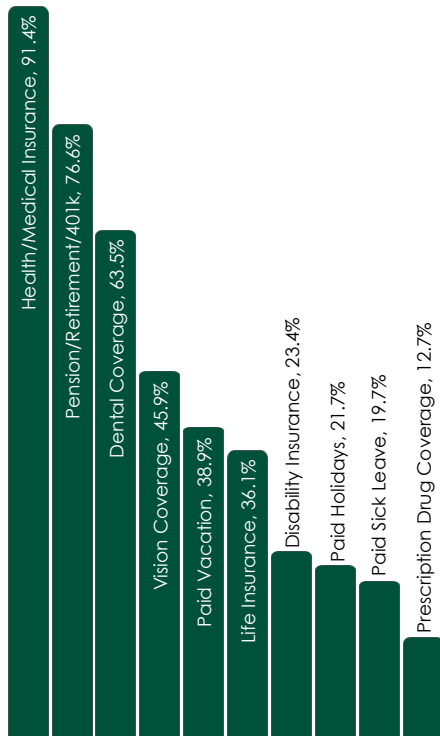
MATERIAL MOVERS:

- Laborers & Material Movers, Hand - 4,115

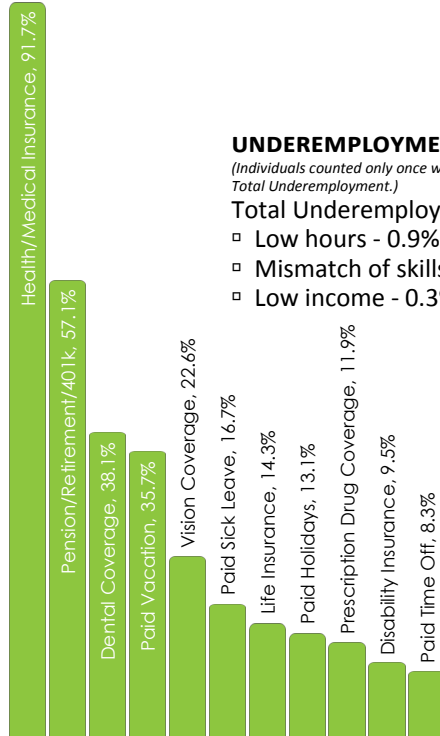
AN ESTIMATED TOTAL OF

124,881 PEOPLE IN THE LABORSHED AREA

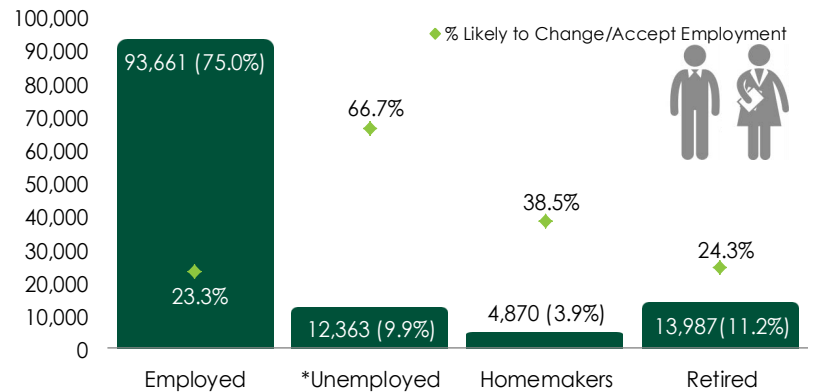
CURRENT BENEFITS:



DESIRED BENEFITS:



ESTIMATED TOTAL BY EMPLOYMENT STATUS (PERCENTAGE):



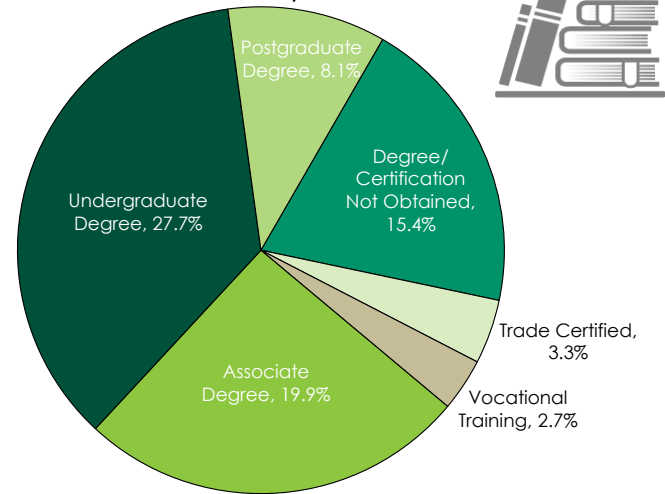
*Employment status is self-identified by the survey respondent. The unemployment percentage does not reflect the unemployment rate published by the U.S. Bureau of Labor Statistics, which applies a stricter definition.

EMPLOYMENT STATS:

- 58.7% paid an hourly wage
- 71.0% are/were employed full-time
- 13.6% are/were employed part-time
- 12.1% are/were self-employed
- 16.5% hold two or more jobs
- Currently working an average of 44 hours/week

EDUCATIONAL LEVEL:

(77.1% HAVE AN EDUCATION BEYOND HIGH SCHOOL)



UNDEREMPLOYMENT:

(Individuals counted only once when estimating Total Underemployment.)

Total Underemployment - 3.0%

- Low hours - 0.9%
- Mismatch of skills - 1.8%
- Low income - 0.3%

TOP JOB SEARCH RESOURCES:

(For those seeking employment opportunities, by use.)

- Internet - 65.5%
 - www.monster.com
 - www.corridorcareers.com
- Local/Regional Newspapers - 32.1%
 - The Gazette - Cedar Rapids
 - The Des Moines Register
- Networking through friends, family or acquaintances - 18.3%
- IowaWORKS Centers - 12.1%

WORKPLACE FLEXIBILITY:

(by percent of interest)

- Cross-training - 78.9%
- Job teams - 75.8%
- Job sharing - 48.4%
- Varied shifts - 41.1%
- Seasonal work - 50.5%
- Temporary work - 48.4%



LABOR CHARACTERISTICS - WAGES

BIOTECHNOLOGY

OCCUPATION	OCCUPATIONAL CODE	MEAN WAGE	ENTRY WAGE	EXPERIENCED WAGE	MEDIAN WAGE	MEAN ANNUAL SALARY
Agricultural and Food Science Technicians	19-4011	\$ 15.38	\$ 10.61	\$ 17.76	\$ 13.27	\$ 31,980
Agricultural Workers, All Other	45-2099	\$ 14.85	\$ 11.93	\$ 16.31	\$ 14.73	\$ 30,883
Animal Scientists	19-1011	\$ 33.81	\$ 19.83	\$ 40.80	\$ 28.46	\$ 70,326
Bakers	51-3011	\$ 11.81	\$ 8.55	\$ 13.44	\$ 11.48	\$ 24,571
Butchers and Meat Cutters	51-3021	\$ 11.93	\$ 8.37	\$ 13.71	\$ 11.55	\$ 24,810
Chemical Technicians	19-4031	\$ 23.05	\$ 17.64	\$ 25.75	\$ 21.46	\$ 47,936
Compliance Managers	13-1041	\$ 29.23	\$ 21.93	\$ 32.88	\$ 27.91	\$ 60,801
Computer and Information Systems Managers	11-3021	\$ 54.90	\$ 39.18	\$ 62.76	\$ 55.41	\$ 114,184
Conservation Scientists	19-1031	\$ 26.20	\$ 18.39	\$ 30.10	\$ 24.57	\$ 54,493
Cutting and Slicing Machine Setters, Operators, and Tenders	51-9032	\$ 15.49	\$ 12.16	\$ 17.16	\$ 15.86	\$ 32,223
Dietetic Technicians	29-2051	\$ 13.78	\$ 8.82	\$ 16.25	\$ 14.17	\$ 28,653
Dietitians and Nutritionists	29-1031	\$ 25.18	\$ 20.12	\$ 27.71	\$ 24.92	\$ 52,373
Engineering Managers	11-9041	\$ 55.82	\$ 42.97	\$ 62.24	\$ 55.32	\$ 116,098
Engineering Technicians, Except Drafters, All Other	17-3029	\$ 24.93	\$ 17.94	\$ 28.42	\$ 24.60	\$ 51,854
Engineers, All Other	17-2199	\$ 34.48	\$ 22.46	\$ 40.50	\$ 34.33	\$ 71,728
Environmental Science and Protection Technicians, Including Health	19-4091	\$ 22.36	\$ 16.38	\$ 25.35	\$ 21.73	\$ 46,501
Farmers, Ranchers, and Other Agricultural Managers	11-9013	\$ 31.19	\$ 23.73	\$ 34.93	\$ 27.90	\$ 64,881
Farmworkers and Laborers, Crop, Nursery, and Greenhouse	45-2092	\$ 11.18	\$ 8.16	\$ 12.70	\$ 9.63	\$ 23,264
First-Line Supervisors/Managers of Non-Retail Sales Workers	41-1012	\$ 30.29	\$ 18.91	\$ 35.97	\$ 28.04	\$ 62,993
First-Line Supervisors/Managers of Production and Operating Workers	51-1011	\$ 26.36	\$ 17.59	\$ 30.74	\$ 24.60	\$ 54,827
Food Batchmakers	51-3092	\$ 16.26	\$ 11.53	\$ 18.62	\$ 15.01	\$ 33,819
Health Technologists and Technicians, All Other	29-2099	\$ 19.56	\$ 13.70	\$ 22.49	\$ 18.76	\$ 40,681
Healthcare Support Workers, All Other	31-9099	\$ 15.39	\$ 10.53	\$ 17.81	\$ 14.66	\$ 32,002
Industrial Engineers	17-2112	\$ 34.81	\$ 26.65	\$ 38.89	\$ 34.40	\$ 72,407
Inspectors, Testers, Sorters, Samplers, and Weighers	51-9061	\$ 18.58	\$ 11.81	\$ 21.96	\$ 17.73	\$ 38,639
Installation, Maintenance, and Repair Workers, All Other	49-9099	\$ 19.85	\$ 13.17	\$ 23.19	\$ 18.61	\$ 41,287
Laborers and Freight, Stock, and Material Movers, Hand	53-7062	\$ 13.78	\$ 9.51	\$ 15.91	\$ 12.94	\$ 28,658
Licensed Practical and Licensed Vocational Nurses	29-2061	\$ 18.66	\$ 15.53	\$ 20.22	\$ 18.34	\$ 38,803
Life, Physical, and Social Science Technicians, All Other	19-4099	\$ 19.02	\$ 10.24	\$ 23.42	\$ 17.04	\$ 39,572
Maintenance and Repair Workers, General	49-9071	\$ 18.58	\$ 11.94	\$ 21.89	\$ 17.94	\$ 38,636
Market Research Analysts and Marketing Specialists	13-1161	\$ 24.59	\$ 15.31	\$ 29.23	\$ 22.70	\$ 51,153
Meat, Poultry, and Fish Cutters and Trimmers	51-3022	\$ 13.23	\$ 11.10	\$ 14.29	\$ 13.25	\$ 27,514
Medical and Clinical Laboratory Technicians	29-2012	\$ 19.46	\$ 14.26	\$ 22.07	\$ 19.31	\$ 40,485
Medical and Clinical Laboratory Technologists	29-2011	\$ 25.97	\$ 19.72	\$ 29.09	\$ 26.02	\$ 54,010
Millwrights	49-9044	\$ 22.78	\$ 17.80	\$ 25.27	\$ 22.10	\$ 47,383
Operations Research Analysts	15-2031	\$ 36.06	\$ 25.67	\$ 41.25	\$ 35.98	\$ 75,006
Paralegals and Legal Assistants	23-2011	\$ 20.09	\$ 14.99	\$ 22.65	\$ 19.41	\$ 41,794
Pharmacy Technicians	29-2052	\$ 14.22	\$ 10.54	\$ 16.06	\$ 13.82	\$ 29,579
Physicians and Surgeons, All Other	29-1069	\$ 108.90	\$ 75.26	N.A.	\$ 92.67	\$ 226,516
Plant and System Operators, All Other	51-8099	\$ 18.13	\$ 16.90	\$ 18.75	\$ 17.55	\$ 37,714
Production Workers, All Other	51-9199	\$ 14.44	\$ 10.10	\$ 16.61	\$ 13.99	\$ 30,035
Registered Nurses	29-1141	\$ 26.23	\$ 19.97	\$ 29.36	\$ 25.99	\$ 54,562
Separating, Filtering, Clarifying, Precipitating, and Still Machine Setters, Operators, and Tenders	51-9012	\$ 21.41	\$ 12.54	\$ 25.85	\$ 17.56	\$ 44,539
Veterinary Technologists and Technicians	29-2056	\$ 13.93	\$ 10.59	\$ 15.59	\$ 13.14	\$ 28,967
Water and Liquid Waste Treatment Plant and System Operators	51-8031	\$ 20.77	\$ 13.38	\$ 24.46	\$ 20.98	\$ 43,195

The 2015 Iowa Wage data for the Creative Corridor Regional Laborshed area was produced by the Labor Force & Occupational Analysis Bureau to provide communities local information on wages by occupation. The source of the wage and employment data is based on the May 2014 OES estimates. Additional occupational wage and employment data can be found at <https://www.iowaworkforcedevelopment.gov/occupational-employment-and-wages>.