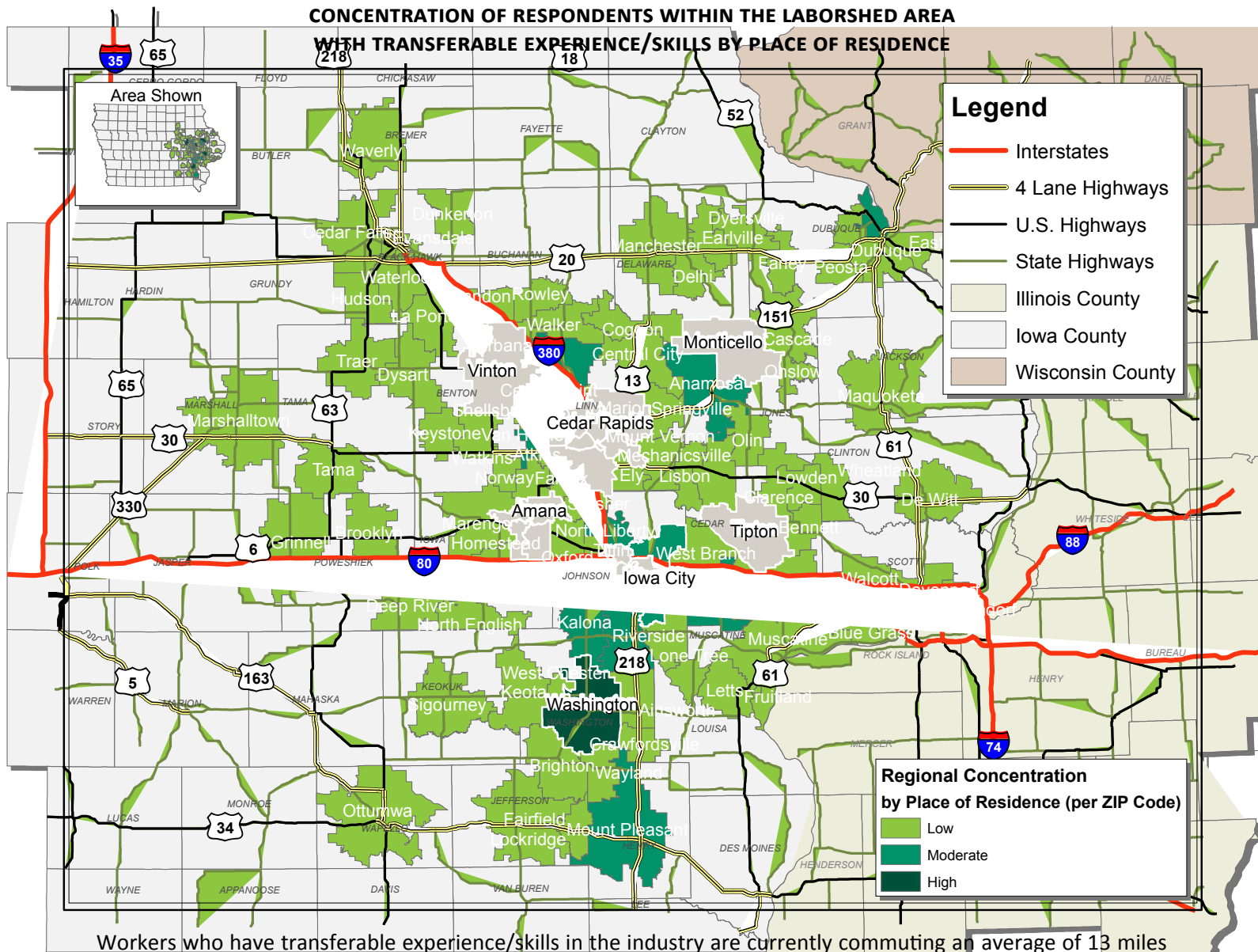


# LABOR CHARACTERISTICS

## FINANCIAL SERVICES



## CREATIVE CORRIDOR REGIONAL LABORSHED AREA



Workers who have transferable experience/skills in the industry are currently commuting an average of 13 miles one way for work. Those who are likely to change/accept employment are willing to commute an average of 25 miles one way for the right employment opportunity.



FOR MORE INFORMATION REGARDING THE CREATIVE CORRIDOR REGIONAL LABORSHED, CONTACT:



**Cedar Rapids Metro Alliance**  
501 First Street SE  
Cedar Rapids, IA 52401  
(319) 730-1425  
Email: [bcrowe@cedarrapids.org](mailto:bcrowe@cedarrapids.org)

**Iowa City Area Development Group**  
316 E Court Street  
Iowa City, IA 52240  
(319) 354-3939  
Email: [dwilliamson@icadgroup.com](mailto:dwilliamson@icadgroup.com)  
[mnlte@icadgroup.com](mailto:mnlte@icadgroup.com)

[iowascreativecorridor.com](http://iowascreativecorridor.com)

# LABOR CHARACTERISTICS



## FINANCIAL SERVICES

### ESTIMATED AVAILABLE LABOR PER OCCUPATIONAL CATEGORY:

#### BUSINESS AND FINANCIAL OPERATIONS:

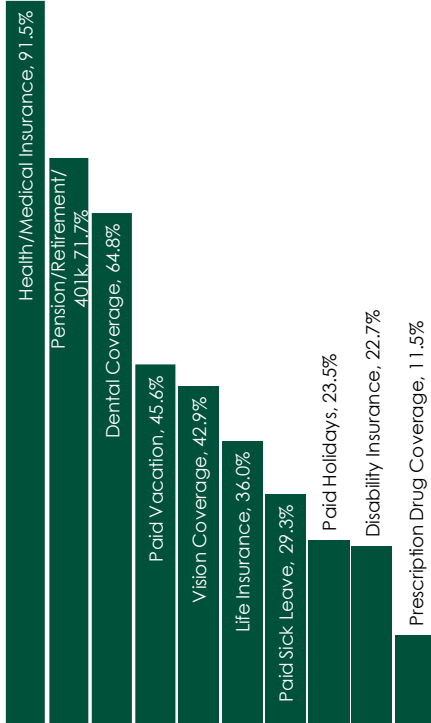
- Chief Executives - 9,778
- Managers - 21,436
- Supervisors - 10,154
- Accountants & Auditors - 5,265
- Assessors of Real Estate - 376
- Bill & Account Collectors - 1,880
- Bookkeeping, Accounting, & Auditing Clerks - 10,906
- Business Operations Specialists - 10,530
- Clerks - 16,171
- Compensation, Benefits & Job Analysis Specialists - 372
- Convention Planners - 1,504
- Cost Estimators - 1,506
- Credit Authorizers - 375
- Customer Service Representatives - 8,274
- Data Entry Keyers - 1,503
- Employment Specialists - 2,633
- Financial Analysts - 3,009
- Financial Examiners - 380
- Financial Services Sales Agents - 371
- Financial Specialists, All Other - 1,128
- Human Resources Assistants - 752
- Insurance Sales Agents - 2,634
- Insurance Underwriters - 1,130
- Labor Relations Specialists - 378
- Lawyers - 4,137
- Loan Counselors - 751
- Loan Officers - 2,632
- Management Analysts - 1,878
- Market Research Analysts & Marketing Specialists - 2,255
- Office Support Workers - 8,649
- Paralegals & Legal Assistants - 1,881
- Personal Financial Advisors - 373
- Real Estate Sales Agents - 1,129
- Receptionists & Secretaries - 24,445
- Tax Preparers - 381
- Tellers - 3,761
- Title Examiners - 377
- Training & Development Specialists - 1,502

#### COMPUTER:

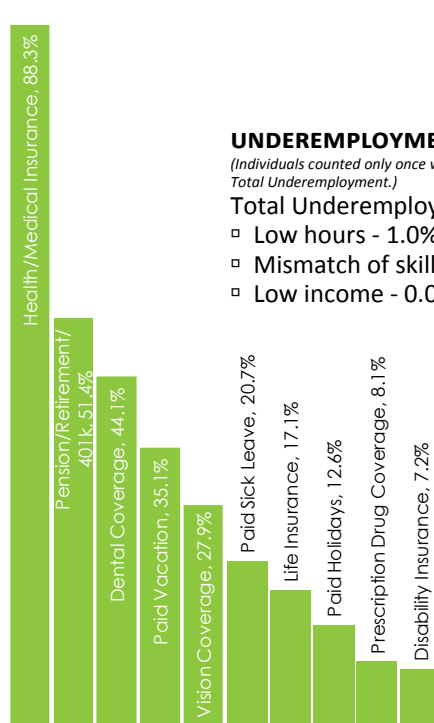
- Managers - 382
- Computer Occupations, All Other - 5,641
- Computer Network Support Specialists - 374
- Computer Programmers - 1,127
- Computer Systems Analysts - 1,882
- Computer User Support Specialists - 1,879
- Database Administrators - 750
- Information Security Analysts - 379
- Network & Computer Systems Administrators - 370
- Operations Research Analysts - 383
- Software Developers, Applications - 2,256
- Software Developers, Systems Software - 1,505
- Web Developers - 753

AN ESTIMATED TOTAL OF **184,277** PEOPLE IN THE LABORSHD

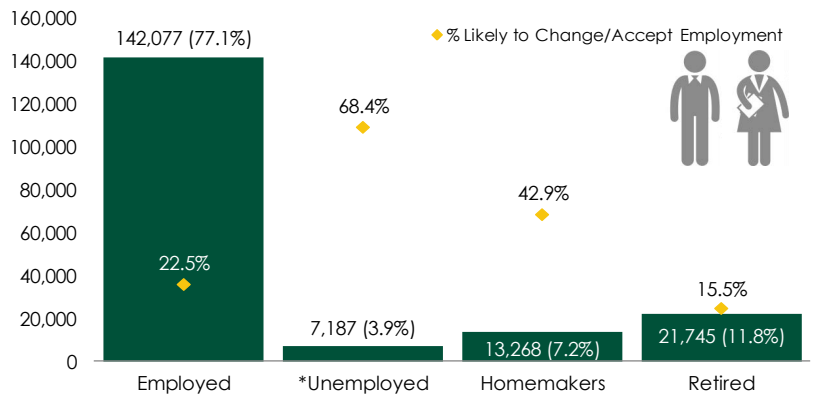
#### CURRENT BENEFITS:



#### DESIRED BENEFITS:



### ESTIMATED TOTAL BY EMPLOYMENT STATUS (PERCENTAGE):



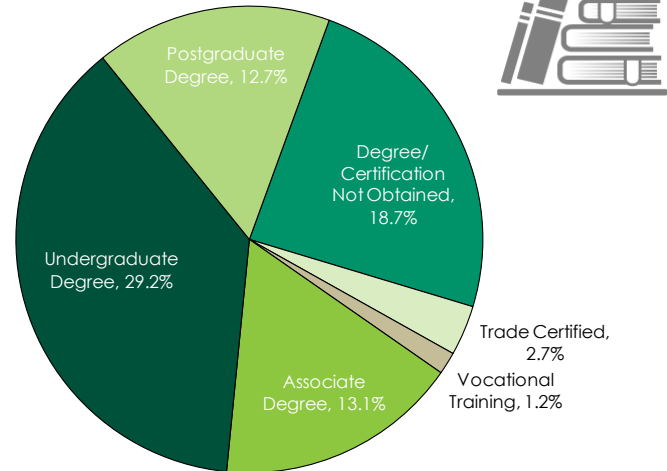
\*Employment status is self-identified by the survey respondent. The unemployment percentage does not reflect the unemployment rate published by the U.S. Bureau of Labor Statistics, which applies a stricter definition.

### EMPLOYMENT STATS:

- 51.2% paid an annual salary
- 78.1% are/were employed full-time
- 12.5% are/were employed part-time
- 7.8% are/were self-employed
- 9.5% hold two or more jobs
- Currently working an average of 41 hours/week

### EDUCATIONAL LEVEL:

(77.6% HAVE AN EDUCATION BEYOND HIGH SCHOOL)



### UNDEREMPLOYMENT:

(Individuals counted only once when estimating Total Underemployment.)

Total Underemployment - 2.2%

- Low hours - 1.0%
- Mismatch of skills - 1.4%
- Low income - 0.0%

### TOP JOB SEARCH RESOURCES:

(For those seeking employment opportunities, by use.)

- Internet - 73.4%
    - [www.corridorcareers.com](http://www.corridorcareers.com)
    - [www.indeed.com](http://www.indeed.com)
    - [www.monster.com](http://www.monster.com)
    - [www.iowajobs.org](http://www.iowajobs.org)
  - Local/Regional Newspapers - 30.8%
    - The Gazette - Cedar Rapids
  - Networking through friends, family or acquaintances - 22.5%
  - IowaWORKS Centers - 10.4%
- 

### WORKPLACE FLEXIBILITY:

(by percent of interest)

- Job teams - 74.0%
  - Cross-training - 65.9%
  - Job sharing - 41.5%
  - Varied shifts - 19.5%
  - Temporary work - 36.9%
  - Seasonal work - 34.4%
-

# LABOR CHARACTERISTICS - WAGES



## FINANCIAL SERVICES

OCCUPATION	OCCUPATIONAL CODE	MEAN WAGE	ENTRY WAGE	EXPERIENCED WAGE	MEDIAN WAGE	MEAN ANNUAL SALARY
Accountants and Auditors	13-2011	\$ 31.45	\$ 21.33	\$ 36.51	\$ 28.65	\$ 65,409
Appraisers and Assessors of Real Estate	13-2021	\$ 29.52	\$ 20.35	\$ 34.10	\$ 23.44	\$ 61,395
Billing and Posting Clerks and Machine Operators	43-3021	\$ 18.62	\$ 13.43	\$ 21.22	\$ 18.15	\$ 38,735
Bookkeeping, Accounting, and Auditing Clerks	43-3031	\$ 16.83	\$ 11.05	\$ 19.72	\$ 16.59	\$ 35,000
Budget Analysts	13-2031	\$ 29.75	\$ 23.25	\$ 32.99	\$ 29.21	\$ 61,871
Business Operations Specialists, All Other	13-1199	\$ 29.84	\$ 19.11	\$ 35.20	\$ 29.10	\$ 62,059
Chief Executives	11-1011	\$ 93.16	\$ 36.47	\$ 121.50	\$ -	\$ 193,771
Claims Adjusters, Examiners, and Investigators	13-1031	\$ 25.56	\$ 16.75	\$ 29.96	\$ 23.62	\$ 53,156
Compensation and Benefits Managers	11-3111	\$ 43.64	\$ 29.46	\$ 50.72	\$ 39.21	\$ 90,766
Compensation, Benefits, and Job Analysis Specialists	13-1141	\$ 30.18	\$ 18.66	\$ 35.93	\$ 26.70	\$ 62,767
Compliance Officers, Except Agriculture, Construction, Health and Safety, and Transportation	13-1041	\$ 30.07	\$ 20.96	\$ 34.63	\$ 27.87	\$ 62,555
Computer Network Support Specialists	15-1152	\$ 25.80	\$ 18.86	\$ 29.27	\$ 25.06	\$ 53,660
Computer Occupations, All Other	15-1199	\$ 33.57	\$ 22.31	\$ 39.20	\$ 32.01	\$ 69,830
Computer Systems Analysts	15-1121	\$ 37.00	\$ 26.45	\$ 42.28	\$ 36.53	\$ 76,961
Computer User Support Specialists	15-1151	\$ 21.12	\$ 14.51	\$ 24.43	\$ 20.38	\$ 43,932
Cost Estimators	13-1051	\$ 27.66	\$ 17.65	\$ 32.67	\$ 27.24	\$ 57,543
Credit Analysts	13-2041	\$ 33.22	\$ 21.42	\$ 39.12	\$ 32.48	\$ 69,094
Credit Authorizers, Checkers, and Clerks	43-4041	\$ 16.93	\$ 13.52	\$ 18.63	\$ 16.13	\$ 35,205
Credit Counselors	13-2071	\$ 16.70	\$ 13.16	\$ 18.47	\$ 16.43	\$ 34,737
Customer Service Representatives	43-4051	\$ 15.86	\$ 11.44	\$ 18.07	\$ 15.20	\$ 32,981
Data Entry Keyers	43-9021	\$ 14.93	\$ 12.98	\$ 15.91	\$ 14.33	\$ 31,056
Financial Analysts	13-2051	\$ 35.22	\$ 26.21	\$ 39.72	\$ 34.52	\$ 73,253
Financial Examiners	13-2061	\$ 31.77	\$ 19.07	\$ 38.13	\$ 27.74	\$ 66,091
Financial Managers	11-3031	\$ 53.25	\$ 31.89	\$ 63.92	\$ 49.27	\$ 110,751
Financial Specialists, All Other	13-2099	\$ 28.99	\$ 17.53	\$ 34.72	\$ 28.57	\$ 60,303
First-Line Supervisors of Office and Administrative Support Workers	43-1011	\$ 22.99	\$ 15.55	\$ 26.72	\$ 21.91	\$ 47,826
Fundraisers	13-1131	\$ 28.71	\$ 14.52	\$ 35.80	\$ 26.13	\$ 59,708
Human Resources Assistants, Except Payroll and Timekeeping	43-4161	\$ 18.74	\$ 12.98	\$ 21.62	\$ 18.83	\$ 38,982
Human Resources Managers	11-3121	\$ 45.38	\$ 29.05	\$ 53.54	\$ 42.25	\$ 94,386
Human Resources Specialists	13-1071	\$ 25.97	\$ 17.82	\$ 30.05	\$ 25.38	\$ 54,023
Insurance Claims and Policy Processing Clerks	43-9041	\$ 16.85	\$ 13.20	\$ 18.68	\$ 16.18	\$ 35,056
Insurance Sales Agents	41-3021	\$ 27.37	\$ 12.18	\$ 34.96	\$ 20.42	\$ 56,926
Insurance Underwriters	13-2053	\$ 24.40	\$ 15.32	\$ 28.93	\$ 23.21	\$ 50,747
Lawyers	23-1011	\$ 45.78	\$ 25.01	\$ 56.16	\$ 36.96	\$ 95,216
Loan Interviewers and Clerks	43-4131	\$ 17.24	\$ 14.16	\$ 18.78	\$ 17.15	\$ 35,867
Loan Officers	13-2072	\$ 35.61	\$ 18.38	\$ 44.22	\$ 33.85	\$ 74,065
Management Analysts	13-1111	\$ 40.02	\$ 21.96	\$ 49.05	\$ 34.85	\$ 83,249
Managers, All Other	11-9199	\$ 43.21	\$ 26.59	\$ 51.52	\$ 41.38	\$ 89,882
Market Research Analysts and Marketing Specialists	13-1161	\$ 25.16	\$ 16.29	\$ 29.59	\$ 24.03	\$ 52,335
Meeting, Convention, and Event Planners	13-1121	\$ 19.93	\$ 12.17	\$ 23.81	\$ 18.33	\$ 41,452
New Accounts Clerks	43-4141	\$ 17.10	\$ 15.30	\$ 18.00	\$ 17.03	\$ 35,567
Office and Administrative Support Workers, All Other	43-9199	\$ 17.01	\$ 10.24	\$ 20.40	\$ 16.54	\$ 35,386
Office Clerks, General	43-9061	\$ 16.82	\$ 11.07	\$ 19.70	\$ 16.74	\$ 34,996
Paralegals and Legal Assistants	23-2011	\$ 21.98	\$ 15.96	\$ 24.98	\$ 22.34	\$ 45,711
Personal Financial Advisors	13-2052	\$ 35.99	\$ 17.17	\$ 45.40	\$ 28.03	\$ 74,854
Purchasing Agents, Except Wholesale, Retail, and Farm Products	13-1023	\$ 32.97	\$ 21.09	\$ 38.91	\$ 29.94	\$ 68,573
Real Estate Sales Agents	41-9022	\$ 23.40	\$ 13.07	\$ 28.56	\$ 21.45	\$ 48,670
Receptionists and Information Clerks	43-4171	\$ 13.79	\$ 9.89	\$ 15.73	\$ 13.54	\$ 28,675
Secretaries and Administrative Assistants, Except Legal, Medical, and Executive	43-6014	\$ 15.93	\$ 11.13	\$ 18.34	\$ 15.09	\$ 33,141
Securities, Commodities, and Financial Services Sales Agents	41-3031	\$ 30.87	\$ 14.30	\$ 39.16	\$ 20.67	\$ 64,217
Software Developers, Applications	15-1132	\$ 38.76	\$ 28.10	\$ 44.08	\$ 37.49	\$ 80,614
Tax Examiners and Collectors, and Revenue Agents	13-2081	\$ 39.97	\$ 29.63	\$ 45.14	\$ 41.63	\$ 83,145
Tax Preparers	13-2082	\$ 22.73	\$ 13.49	\$ 27.36	\$ 17.81	\$ 47,286
Tellers	43-3071	\$ 13.15	\$ 10.53	\$ 14.46	\$ 13.01	\$ 27,355
Title Examiners, Abstractors, and Searchers	23-2093	\$ 17.17	\$ 13.28	\$ 19.11	\$ 15.32	\$ 35,705
Training and Development Specialists	13-1151	\$ 27.46	\$ 17.32	\$ 32.54	\$ 26.46	\$ 57,126

The 2016 Iowa Wage data for IWD Region 10 was produced by the Labor Force & Occupational Analysis Bureau to provide communities local information on wages by occupation. The source of the wage and employment data is based on the May 2015 OES estimates. Additional occupational wage and employment data can be found at <https://www.iowaworkforcedevelopment.gov/iawagereport>.