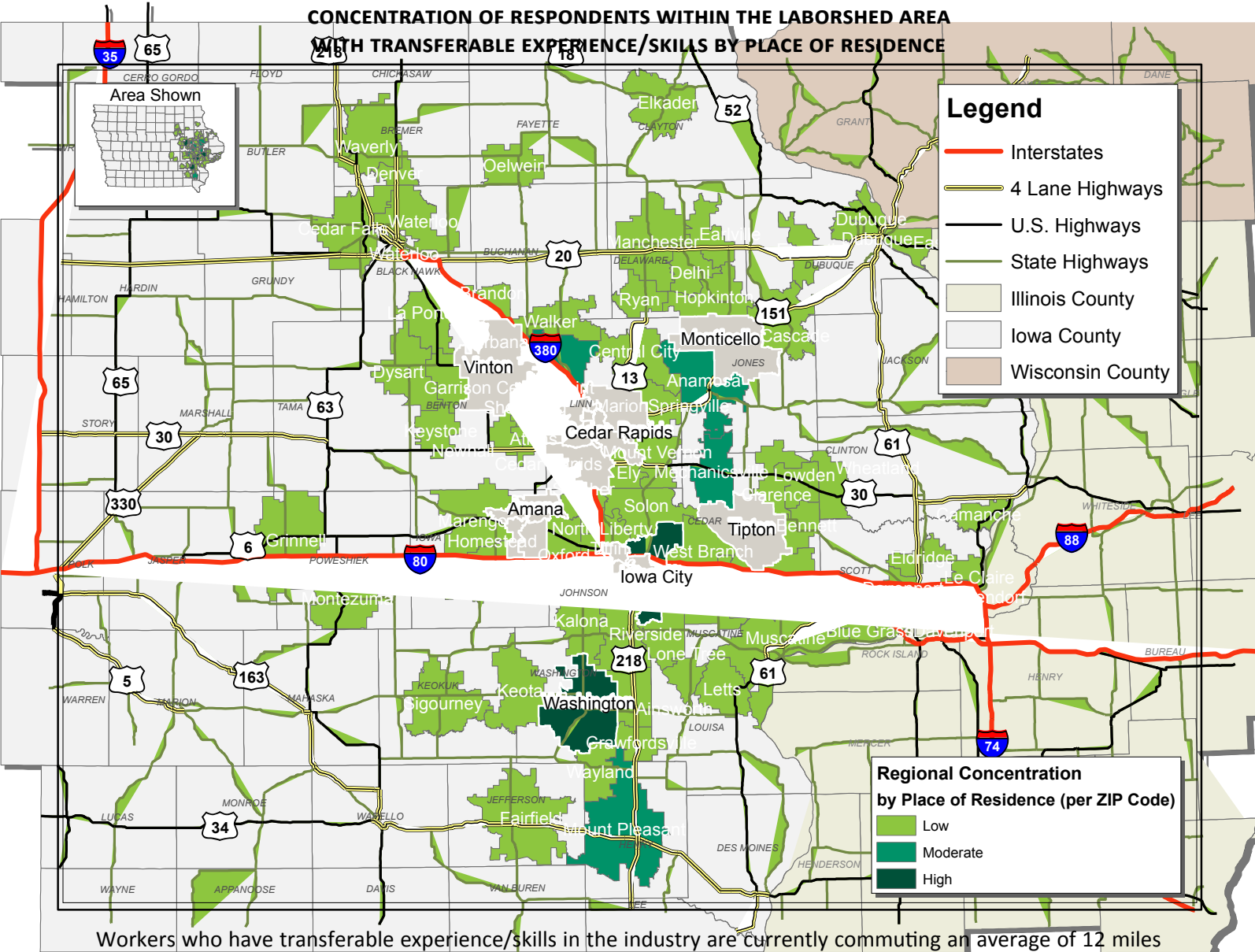


# LABOR CHARACTERISTICS HEALTHCARE



## CREATIVE CORRIDOR REGIONAL LABORSHED AREA

CONCENTRATION OF RESPONDENTS WITHIN THE LABORSHED AREA  
WITH TRANSFERABLE EXPERIENCE/SKILLS BY PLACE OF RESIDENCE



Workers who have transferable experience/skills in the industry are currently commuting an average of 12 miles one way for work. Those who are likely to change/accept employment are willing to commute an average of 23 miles one way for the right employment opportunity.

IOWA  
**WORKFORCE**  
DEVELOPMENT

FOR MORE INFORMATION REGARDING THE CREATIVE CORRIDOR REGIONAL LABORSHED, CONTACT:

**ICR** IOWA CITY  
IOWA CEDAR RAPIDS

**Cedar Rapids Metro Alliance**  
501 First Street SE  
Cedar Rapids, IA 52401  
(319) 730-1425  
Email: [bcrowe@cedarrapids.org](mailto:bcrowe@cedarrapids.org)

**Iowa City Area Development Group**  
316 E Court Street  
Iowa City, IA 52240  
(319) 354-3939  
Email: [dwilliamson@icadgroup.com](mailto:dwilliamson@icadgroup.com)  
[mnlte@icadgroup.com](mailto:mnlte@icadgroup.com)

[iowascreativecorridor.com](http://iowascreativecorridor.com)

# LABOR CHARACTERISTICS



## HEALTHCARE

### ESTIMATED AVAILABLE LABOR PER OCCUPATIONAL CATEGORY:

#### BUSINESS OPERATIONS:

- Managers - 7,505
- Supervisors - 10,133
- Bill & Account Collectors - 1,876
- Billing & Posting Clerks - 750
- Bookkeeping Clerks - 10,882
- Occupational Health & Safety Specialist - 375
- Administrative Support Workers, All Other - 8,631
- Office Clerks, General - 10,131
- Receptionists - 3,378

#### HEALTHCARE:

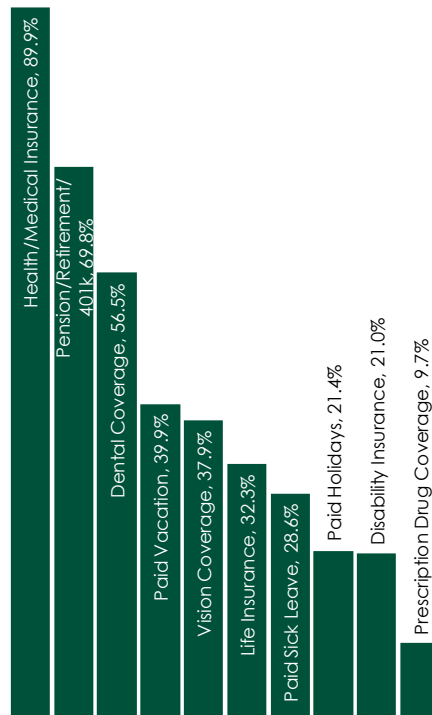
- Managers - 2,627
- Audiologists - 380
- Counselors & Social Workers - 10,132
- Dental Assistants - 2,626
- Dietitians - 1,124
- Family & General Practitioners - 747
- Health Educators - 373
- Health Technologists & Technicians - 9,006
- Healthcare Support Workers, All Other - 370
- Home Health Aides - 1,501
- Licensed Practical & Vocational Nurses - 753
- Massage Therapists - 1,126
- Medical Assistants - 2,251
- Medical Secretaries - 752
- Medical Transcriptionists - 379
- Nursing Assistants - 6,379
- Opticians, Dispensing - 374
- Optometrists - 381
- Pharmacists - 4,878
- Pharmacy Aides - 376
- Physical Therapist Aides & Assistants - 1,127
- Physical Therapists - 1,502
- Physicians & Surgeons, All Other - 2,628
- Physician Assistants - 372
- Recreational Therapists - 377
- Respiratory Therapists - 371
- Speech Pathologists - 748
- Veterinarians - 754
- Veterinary Assistants - 378

#### HOSPITALITY & SUPPORT STAFF:

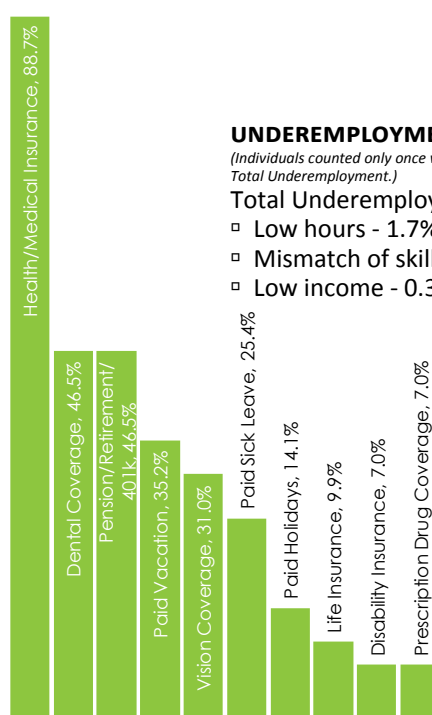
- Supervisors - 3,377
- Bus Drivers, Transit & Intercity - 1,125
- Dishwashers - 1,875
- Dining Room & Cafeteria Attendants - 2,625
- Janitors & Housekeeping - 11,257

AN ESTIMATED TOTAL OF **130,212** PEOPLE IN THE LABORSLED

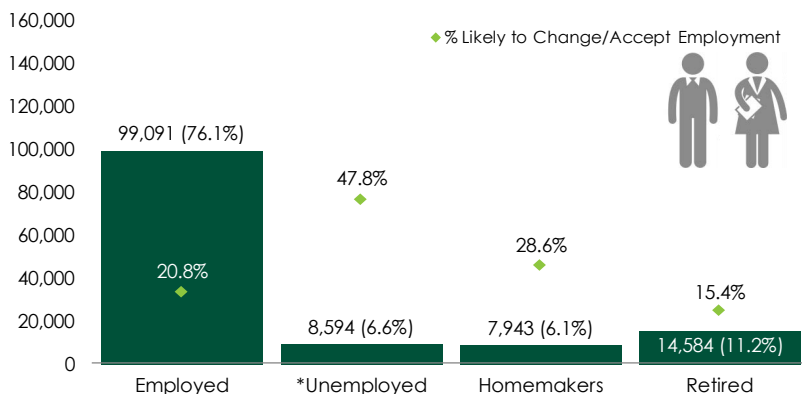
#### CURRENT BENEFITS:



#### DESIRED BENEFITS:



### ESTIMATED TOTAL BY EMPLOYMENT STATUS (PERCENTAGE):



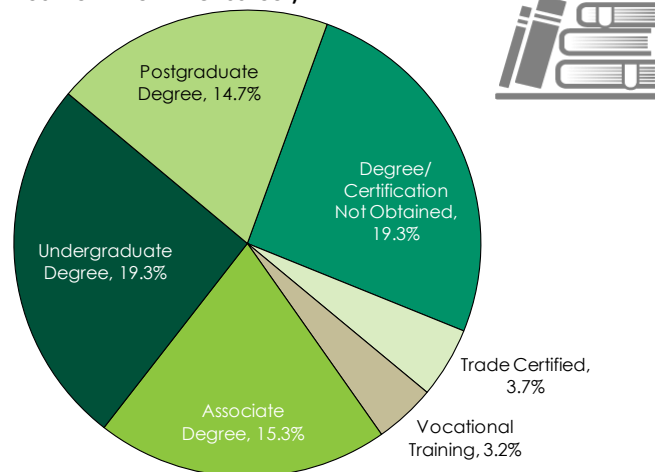
\*Employment status is self-identified by the survey respondent. The unemployment percentage does not reflect the unemployment rate published by the U.S. Bureau of Labor Statistics, which applies a stricter definition.

### EMPLOYMENT STATS:

- 63.3% paid an hourly wage
- 68.3% are/were employed full-time
- 23.1% are/were employed part-time
- 6.1% are/were self-employed
- 14.1% hold two or more jobs
- Currently working an average of 38 hours/week

### EDUCATIONAL LEVEL:

(75.5% HAVE AN EDUCATION BEYOND HIGH SCHOOL)



### UNDEREMPLOYMENT:

(Individuals counted only once when estimating Total Underemployment.)

Total Underemployment - 3.7%

- Low hours - 1.7%
- Mismatch of skills - 2.6%
- Low income - 0.3%

### TOP JOB SEARCH RESOURCES:

(For those seeking employment opportunities, by use.)

- Internet - 70.2%
  - [www.indeed.com](http://www.indeed.com)
  - [www.corridorcareers.com](http://www.corridorcareers.com)
  - [www.iowajobs.org](http://www.iowajobs.org)
  - [www.monster.com](http://www.monster.com)
- Local/Regional Newspapers - 36.9%
  - The Gazette - Cedar Rapids
- Networking through friends, family or acquaintances - 17.8%
- IowaWORKS Centers - 15.1%

### WORKPLACE FLEXIBILITY:

(by percent of interest)

- Job teams - 79.5%
- Cross-training - 71.8%
- Job sharing - 47.4%
- Varied shifts - 25.3%
- Seasonal work - 41.0%
- Temporary work - 35.9%



# LABOR CHARACTERISTICS - WAGES

## HEALTHCARE

OCCUPATION	OCCUPATIONAL CODE	MEAN WAGE	ENTRY WAGE	EXPERIENCED WAGE	MEDIAN WAGE	MEAN ANNUAL SALARY
Administrative Services Managers	11-3011	\$ 42.05	\$ 29.06	\$ 48.55	\$ 39.13	\$ 87,473
Audiologists	29-1181	\$ 43.60	\$ 29.97	\$ 50.41	\$ 36.62	\$ 90,686
Cardiovascular Technologists and Technicians	29-2031	\$ 25.49	\$ 14.28	\$ 31.09	\$ 21.32	\$ 53,017
Chiropractors	29-1011	\$ 32.26	\$ 14.79	\$ 40.99	\$ 29.13	\$ 67,099
Counselors, All Other	21-1019	\$ 16.34	\$ 12.78	\$ 18.13	\$ 13.99	\$ 33,995
Dietitians and Nutritionists	29-1031	\$ 27.08	\$ 21.78	\$ 29.73	\$ 26.73	\$ 56,325
Emergency Medical Technicians and Paramedics	29-2041	\$ 14.95	\$ 9.15	\$ 17.84	\$ 13.86	\$ 31,087
Family and General Practitioners	29-1062	\$ 119.31	\$ 80.59	\$ 138.66	N.A.	\$ 248,156
Health Diagnosing and Treating Practitioners, All Other	29-1199	\$ 35.04	\$ 24.57	\$ 40.27	\$ 34.18	\$ 72,873
Health Technologists and Technicians, All Other	29-2099	\$ 22.69	\$ 16.11	\$ 25.98	\$ 21.82	\$ 47,191
Healthcare Support Workers, All Other	31-9099	\$ 18.71	\$ 13.61	\$ 21.26	\$ 18.45	\$ 38,920
Home Health Aides	31-1011	\$ 13.08	\$ 10.77	\$ 14.24	\$ 12.18	\$ 27,207
Licensed Practical and Licensed Vocational Nurses	29-2061	\$ 19.88	\$ 16.52	\$ 21.55	\$ 20.20	\$ 41,345
Massage Therapists	31-9011	\$ 24.90	\$ 12.17	\$ 31.26	\$ 25.25	\$ 51,789
Medical and Clinical Laboratory Technicians	29-2012	\$ 21.07	\$ 15.38	\$ 23.91	\$ 20.82	\$ 43,820
Medical and Clinical Laboratory Technologists	29-2011	\$ 26.89	\$ 19.70	\$ 30.49	\$ 27.17	\$ 55,929
Medical and Health Services Managers	11-9111	\$ 44.72	\$ 28.70	\$ 52.74	\$ 40.60	\$ 93,028
Medical Assistants	31-9092	\$ 16.63	\$ 12.97	\$ 18.47	\$ 16.51	\$ 34,598
Medical Equipment Preparers	31-9093	\$ 18.61	\$ 14.19	\$ 20.82	\$ 18.43	\$ 38,699
Medical Records and Health Information Technicians	29-2071	\$ 22.20	\$ 16.22	\$ 25.18	\$ 21.73	\$ 46,169
Nurse Practitioners	29-1171	\$ 46.26	\$ 42.34	\$ 48.23	\$ 46.01	\$ 96,231
Nursing Assistants	31-1014	\$ 13.39	\$ 10.85	\$ 14.66	\$ 13.26	\$ 27,858
Occupational Health and Safety Specialists	29-9011	\$ 32.53	\$ 23.05	\$ 37.28	\$ 30.61	\$ 67,671
Occupational Health and Safety Technicians	29-9012	\$ 23.49	\$ 16.58	\$ 26.94	\$ 22.39	\$ 48,854
Occupational Therapists	29-1122	\$ 34.01	\$ 28.35	\$ 36.84	\$ 34.74	\$ 70,739
Occupational Therapy Assistants	31-2011	\$ 24.55	\$ 20.63	\$ 26.51	\$ 24.10	\$ 51,064
Opticians, Dispensing	29-2081	\$ 14.93	\$ 10.00	\$ 17.40	\$ 13.98	\$ 31,062
Optometrists	29-1041	\$ 48.93	\$ 31.01	\$ 57.88	\$ 52.19	\$ 101,766
Pharmacists	29-1051	\$ 52.56	\$ 43.22	\$ 57.22	\$ 55.30	\$ 109,315
Pharmacy Aides	31-9095	\$ 13.00	\$ 8.66	\$ 15.17	\$ 11.98	\$ 27,048
Pharmacy Technicians	29-2052	\$ 15.44	\$ 11.69	\$ 17.32	\$ 14.79	\$ 32,125
Phlebotomists	31-9097	\$ 14.32	\$ 12.04	\$ 15.46	\$ 14.05	\$ 29,789
Physical Therapist Aides	31-2022	\$ 12.28	\$ 10.83	\$ 13.00	\$ 11.90	\$ 25,536
Physical Therapist Assistants	31-2021	\$ 21.50	\$ 14.80	\$ 24.85	\$ 22.04	\$ 44,714
Physical Therapists	29-1123	\$ 37.07	\$ 29.93	\$ 40.64	\$ 36.50	\$ 77,100
Physician Assistants	29-1071	\$ 56.06	\$ 42.18	\$ 63.00	\$ 51.02	\$ 116,603
Physicians and Surgeons, All Other	29-1069	\$ 102.45	\$ 68.96	\$ 119.20	\$ 96.63	\$ 213,101
Radiation Therapists	29-1124	\$ 34.42	\$ 28.13	\$ 37.57	\$ 32.00	\$ 71,599
Radiologic Technologists and Technicians	29-2034	\$ 23.38	\$ 15.93	\$ 27.10	\$ 23.35	\$ 48,624
Receptionists and Information Clerks	43-4171	\$ 14.03	\$ 9.99	\$ 16.05	\$ 13.88	\$ 29,181
Recreational Therapists	29-1125	\$ 22.57	\$ 13.94	\$ 26.89	\$ 22.58	\$ 46,944
Registered Nurses	29-1141	\$ 28.87	\$ 22.34	\$ 32.13	\$ 28.61	\$ 60,040
Respiratory Therapists	29-1126	\$ 26.14	\$ 21.38	\$ 28.52	\$ 26.12	\$ 54,374
Speech-Language Pathologists	29-1127	\$ 32.68	\$ 26.29	\$ 35.88	\$ 33.02	\$ 67,979
Substance Abuse and Behavioral Disorder Counselors	21-1011	\$ 21.37	\$ 11.82	\$ 26.15	\$ 20.80	\$ 44,456

The 2017 Iowa Wage data for IWD Region 10 (which includes: Benton, Cedar, Iowa, Johnson, Jones, Linn, and Washington counties) was produced by the Labor Force & Occupational Analysis Bureau to provide communities local information on wages by occupation. The source of the wage and employment data is based on the May 2016 OES estimates. Additional occupational wage and employment data can be found at <https://www.iowaworkforcedevelopment.gov/iawagereport>.