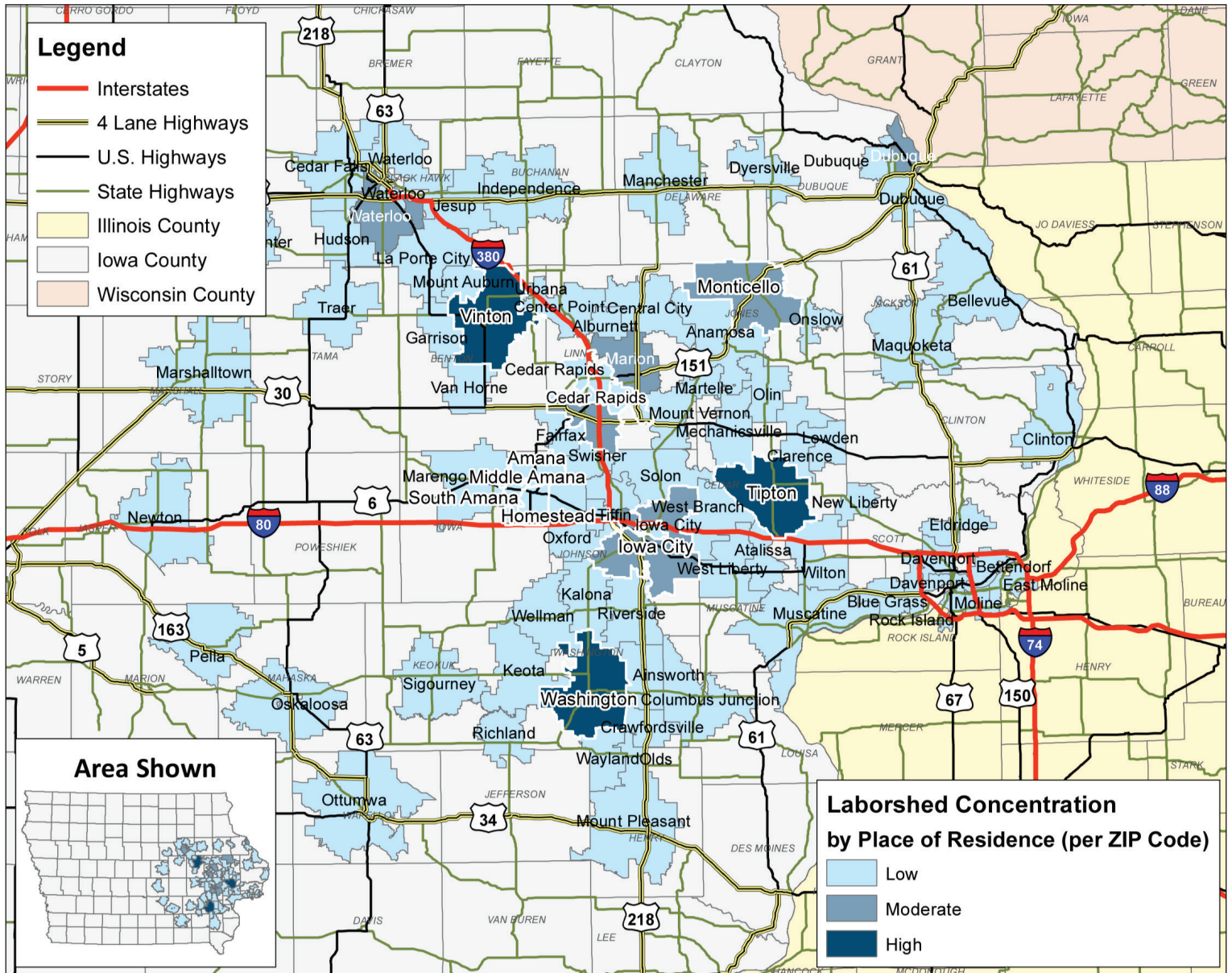




LABOR CHARACTERISTICS

HEALTHCARE

CONCENTRATION OF RESPONDENTS WITHIN THE LABORSHED AREA WITH TRANSFERABLE EXPERIENCE/SKILLS BY PLACE OF RESIDENCE

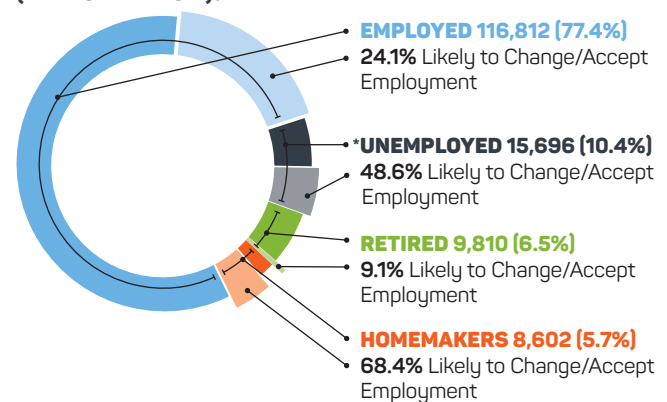


Workers with transferable industry experience/
skills are currently commuting an average of **14 miles**
one way for work.

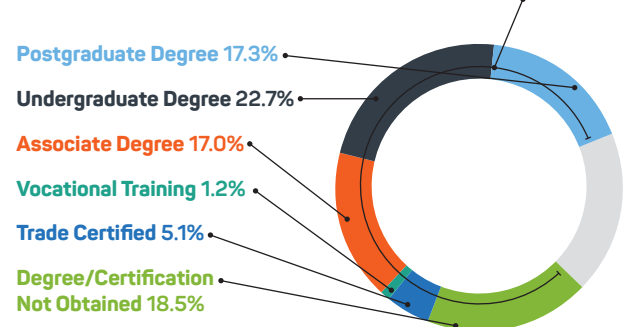
Those who are likely to change/accept
employment are willing to commute an average of **23 miles** one way for the right employment opportunity.

EMPLOYMENT**61.6%**
paid an hourly wage**76.4%**
are/were employed
full-time**17.9%**
are/were
self-employed**23.6%**
are/were employed
part-time**19.2%**
hold two or
more jobsCurrently working
an average of
40 hours/week**UNDER-
EMPLOYMENT**
(estimated):**1.8% (562)**
Low hours**3.6% (1,124)**
Mismatch of skills**0.3% (94)**
Low income**5.4% (1,686)**
Total
(Individuals counted
only once when
estimating Total
Underemployment.)**ESTIMATED AVAILABLE LABOR PER
OCCUPATIONAL CATEGORY:**

• Anesthesiologists	445
• Childcare Workers	6,730
• Chiropractors	447
• Counselors	1,354
• Dental Assistants	1,797
• Dental Hygienists	891
• Dentists, General	901
• Dietetic Technicians	437
• Dietitians and Nutritionists	451
• Food Preparation Workers	4,043
• Food Preparation Workers	898
• Health Technologists and Technicians	1,335
• Home Health Aides	3,147
• Human Service Assistants	3,594
• Janitors and Housekeeping	11,678
• Laboratory Technologists and Technicians	1,340
• Maintenance and Repair Workers	6,288
• Managers	17,967
• Massage Therapists	1,361
• Medical Assistants	3,141
• Medical Records Technicians	1,785
• Nurse Anesthetists	439
• Nurse Practitioners	1,809
• Nurses	20,661
• Nursing Assistants	13,475
• Occupational Therapists	1,348
• Occupational Therapy Assistants	463
• Office Clerks	6,746
• Ophthalmic Medical Technicians	461
• Opticians, Dispensing	886
• Paramedics	1,351
• Pediatricians, General	453
• Personal Care Aides	6,738
• Pharmacists	3,593
• Pharmacy Technicians	2,243
• Physical Therapist Assistants	910
• Physical Therapists	1,799
• Physician Assistants	1,795
• Physicians and Surgeons	2,249
• Psychiatric Aides	435
• Radiation Therapists	455
• Radiologic Technologists	1,345
• Security Guards	2,695
• Social Workers	4,941
• Speech-Language Pathologists	441
• Surgeons	443
• Therapists, All Other	905
• Treating Practitioners	459
• Veterinarians	457
• Veterinary Assistants	895

**AN ESTIMATED TOTAL OF 150,920 PEOPLE IN THE
LABORSHED AREA****ESTIMATED TOTAL BY EMPLOYMENT STATUS
(PERCENTAGE):**

*Employment status is self-identified by the survey respondent. The unemployment percentage above does not reflect the unemployment rate published by the U.S. Bureau of Labor Statistics, which applies a stricter definition.

EDUCATIONAL LEVEL**81.8% HAVE AN EDUCATION BEYOND HIGH SCHOOL.****TOP JOB SEARCH
RESOURCES:**(For those seeking employment
opportunities, by use.)

- Internet 77.4%**
www.indeed.com
www.linkedin.com
- Networking through friends,
family or acquaintances 32.2%**
- Newspapers 15.0%**
The Gazette-Cedar Rapids
- IowaWORKS Centers 13.1%**

**WORKPLACE
FLEXIBILITY:**

(by percent of interest)

- Job teams 86.0%**
- Cross-training 64.1%**
- Job sharing 56.0%**
- Temporary work 48.9%**
- Seasonal work 48.9%**
- Varied shifts 35.5%**

CURRENT BENEFITS & DESIRED BENEFITS

Health/Medical Insurance	82.9%	80.9%
Pension/Retirement/401k	78.2%	77.5%
Dental Coverage	75.0%	73.0%
Paid Vacation	70.4%	71.9%
Life Insurance	67.9%	65.2%
Paid Holidays	72.5%	75.3%
Disability Insurance	65.4%	61.8%
Vision Coverage	65.0%	67.4%
Prescription Drug Coverage	51.4%	
Paid Sick Leave	65.7%	73.0%
Shift Differential Pay	61.8%	

LABOR CHARACTERISTICS

OCCUPATION	OCCUPATIONAL CODE	MEAN WAGE	ENTRY WAGE	EXPERIENCED WAGE	MEDIAN WAGE	MEAN ANNUAL SALARY
Administrative Services Managers	11-3011	\$36.51	\$27.76	\$40.88	\$35.59	\$75,931
Billing and Posting Clerks and Machine Operators	43-3021	\$15.98	\$12.45	\$17.75	\$14.80	\$33,246
Child, Family, and School Social Workers	21-1021	\$18.67	\$13.18	\$21.41	\$16.64	\$38,823
Childcare Workers	39-9011	\$8.48	\$8.32	\$8.56	\$8.60	\$17,640
Chiropractors	29-1011	\$31.47	\$19.00	\$37.70	\$28.58	\$65,454
Combined Food Preparation and Serving Workers, Including Fast Food	35-3021	\$10.01	\$8.35	\$10.85	\$9.44	\$20,826
Community and Social Service Specialists, All Other	21-1099	\$17.95	\$13.36	\$20.25	\$16.72	\$37,344
Dental Assistants	31-9091	\$18.91	\$15.96	\$20.39	\$18.55	\$39,337
Dental Hygienists	29-2021	\$27.37	\$23.12	\$29.49	\$26.89	\$56,924
Dietitians and Nutritionists	29-1031	\$29.92	\$20.44	\$34.65	\$31.21	\$62,227
Emergency Medical Technicians and Paramedics	29-2041	\$13.74	\$10.61	\$15.31	\$12.92	\$28,581
Food Preparation Workers	35-2021	\$9.66	\$8.50	\$10.24	\$9.27	\$20,091
Healthcare Social Workers	21-1022	\$19.76	\$17.20	\$21.04	\$19.30	\$41,098
Home Health Aides	31-1011	\$14.71	\$12.24	\$15.95	\$14.69	\$30,598
Janitors and Cleaners, Except Maids and Housekeeping Cleaners	37-2011	\$12.97	\$9.29	\$14.81	\$12.64	\$26,974
Laundry and Dry-Cleaning Workers	51-6011	\$11.86	\$10.40	\$12.59	\$11.59	\$24,669
Licensed Practical and Licensed Vocational Nurses	29-2061	\$20.19	\$16.76	\$21.91	\$20.75	\$41,996
Maids and Housekeeping Cleaners	37-2012	\$11.77	\$9.56	\$12.87	\$11.47	\$24,474
Maintenance and Repair Workers, General	49-9071	\$18.32	\$13.66	\$20.64	\$18.45	\$38,096
Medical and Health Services Managers	11-9111	\$34.03	\$24.84	\$38.63	\$33.48	\$70,782
Medical Assistants	31-9092	\$16.63	\$14.58	\$17.65	\$16.83	\$34,584
Medical Records and Health Information Technicians	29-2071	\$19.58	\$15.24	\$21.74	\$18.60	\$40,721
Medical Transcriptionists	31-9094	\$16.33	\$14.09	\$17.46	\$16.64	\$33,976
Nurse Practitioners	29-1171	\$50.17	\$31.89	\$59.30	\$49.85	\$104,345
Nursing Assistants	31-1014	\$13.34	\$10.79	\$14.61	\$13.05	\$27,738
Occupational Health and Safety Specialists	29-9011	\$42.40	\$25.15	\$51.02	\$29.83	\$88,185
Personal Care Aides	39-9021	\$12.86	\$10.62	\$13.99	\$13.01	\$26,759
Pharmacists	29-1051	\$58.77	\$52.92	\$61.69	\$58.36	\$122,241
Pharmacy Technicians	29-2052	\$14.65	\$11.40	\$16.28	\$14.91	\$30,482
Physical Therapist Assistants	31-2021	\$20.80	\$16.01	\$23.19	\$21.47	\$43,259
Physician Assistants	29-1071	\$56.18	\$51.30	\$58.61	\$57.07	\$116,845
Radiologic Technologists and Technicians	29-2034	\$27.10	\$21.48	\$29.90	\$27.21	\$56,361
Receptionists and Information Clerks	43-4171	\$13.39	\$10.50	\$14.84	\$13.12	\$27,858
Registered Nurses	29-1141	\$26.19	\$20.66	\$28.96	\$25.12	\$54,479
Security Guards	33-9032	\$12.42	\$9.91	\$13.67	\$13.00	\$25,826
Social and Community Service Managers	11-9151	\$28.78	\$17.39	\$34.48	\$23.61	\$59,863
Social and Human Service Assistants	21-1093	\$19.83	\$14.52	\$22.49	\$18.38	\$41,255

The 2018 Iowa Wage data for the Iowa City/Cedar Rapids Region Laborshed area was produced by the Labor Force & Occupational Analysis Bureau to provide communities local information on wages by occupation. The source of the wage and employment data is based on the May 2017 OES estimates. Additional occupational wage and employment data can be found at www.iowalmi.gov/laborshed.

Balance of data compiled by Iowa Workforce Development using Laborshed data released in 2019.

FOR MORE INFORMATION REGARDING THE IOWA CITY/CEDAR RAPIDS REGION, IA LABORSHED, CONTACT:

ICR IOWA, 501 1st Street SE, Cedar Rapids, IA 52401
(319) 309-339-1388 • jdaly@icriowa.org • www.icriowa.org