

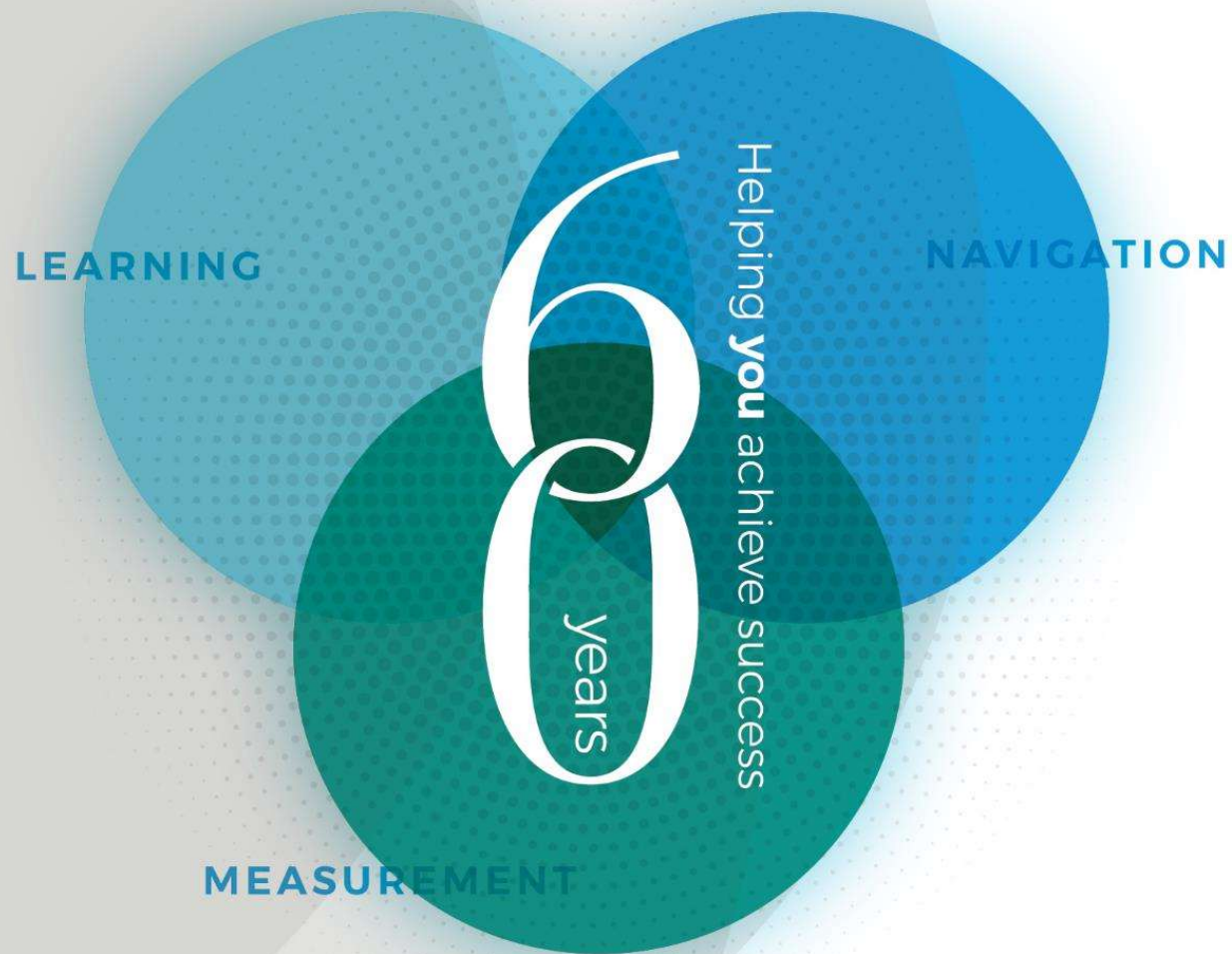
Learning Solutions

Overview | June 10, 2020

Julie Murphy
Sr. Director, Learning Division
julie.murphy@act.org

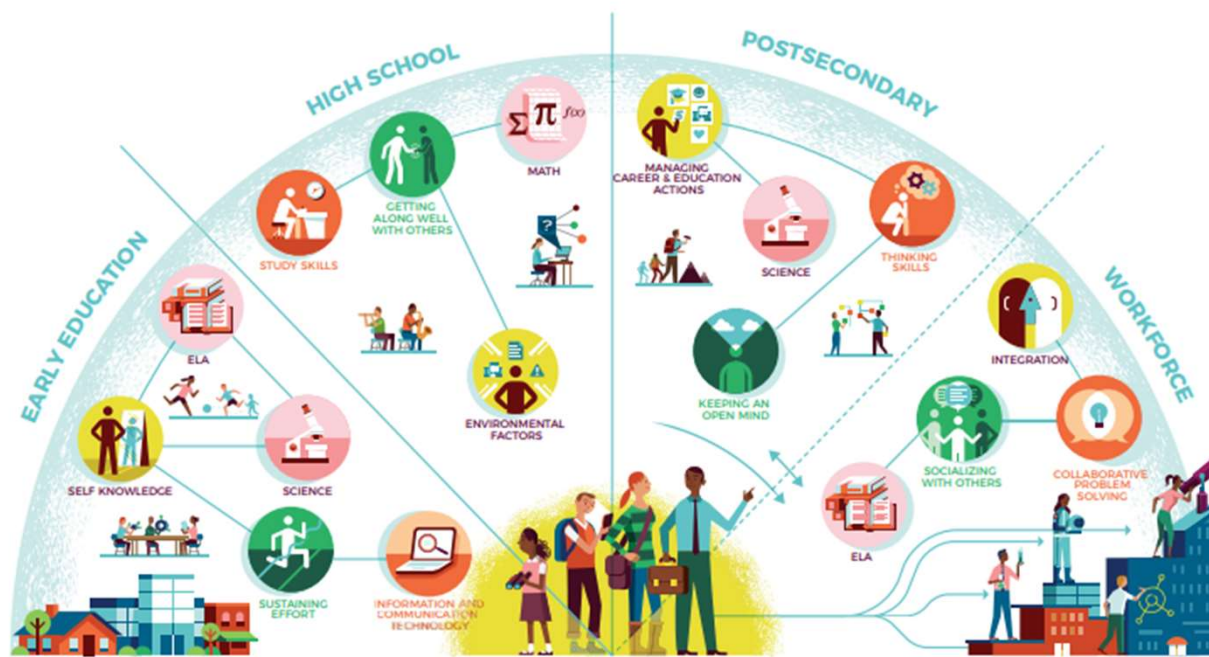


LEARNING | MEASUREMENT | NAVIGATION



Beyond Academics

Preparing for college, careers, and life requires a diverse set of knowledge and skills.



The holistic model of education and work success

CORE ACADEMIC SKILLS English Language Arts Mathematics Science	CROSS-CUTTING CAPABILITIES Information and Communication Technology Collaborative Problem Solving Thinking Skills Learning Skills	BEHAVIORAL SKILLS Acting Honestly Getting Along Well with Others Keeping an Open Mind Maintaining Composure Socializing with Others Sustaining Effort	EDUCATION & CAREER NAVIGATION Self-Knowledge Environmental Factors Integration Managing Career & Education Actions
--	--	--	---

ACT®

3

6 years

Return to School Models

Full Return

- Most students return to school and follow Department of Health Recommendations
- Virtual learning for students that can't return to school

Blended

- Most students return to school and follow Department of Health Recommendations
- Students receive a blend of face-to-face instruction and remote learning
- Virtual learning for students that can't return to school

Full Remote

- All students receive services through virtual learning

Which model will your District follow?

ACT®

4

6
years

Challenge:

No matter the Return to School Model –

Meeting students exactly where they are with the right level of practice, instruction, assessment and remediation to ensure the master every concept.

ACT Adaptive Learning Solutions

For Teachers



ScootPad

Delivers continuously personalized enrichment, remediation and mastery to every student.

For Parents

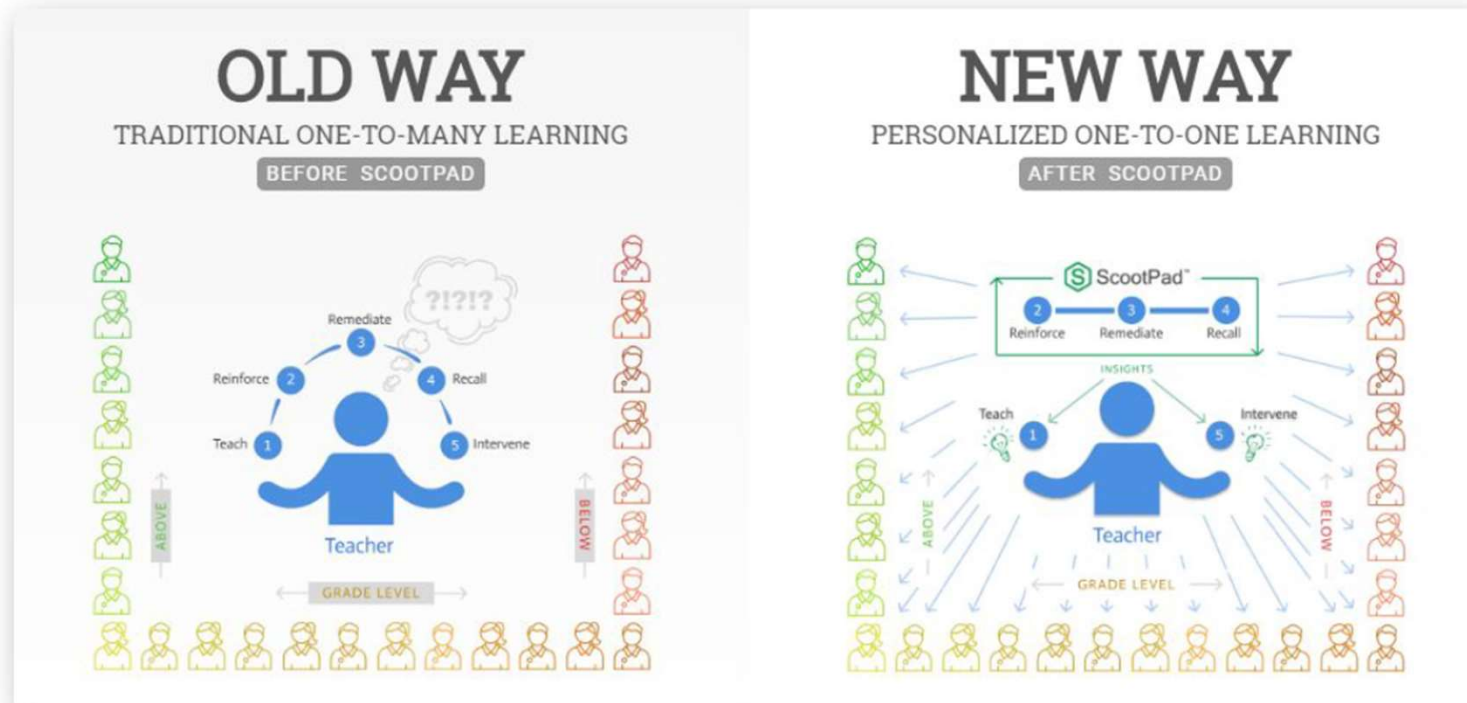


SimplyAdaptive

The leading at-home, adaptive learning program proven to help kids master skills.

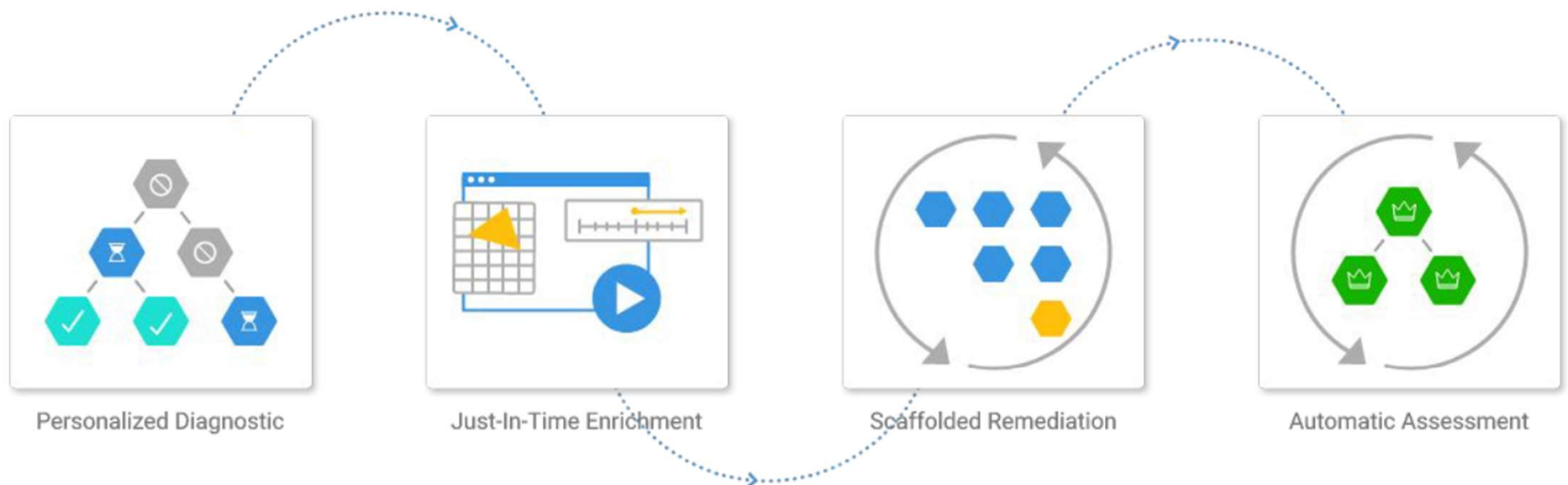
ScootPad Transforms Student Learning

ScootPad transforms each students' journey towards mastery through **personalized practice**, **real-time remediation** and **automatic mastery assessment**.



Adaptive Learning Powered Personalized Mastery

Unlike "single-point adaptivity" and "adaptive testing" solutions, our platform delivers **continuous adaptivity** throughout each students' personalized learning path towards mastery of their curriculum.



Learn More: [ScootPad.com > How It Works](https://www.scootpad.com/how-it-works)

Actionable Real-Time Interventions

ScootPad converts real-time data into readily actionable insights to empower teachers and coaches to focus their time on delivering interventions instead of making sense of data.

The screenshot displays a ScootPad interface with a table showing student performance. The table has two columns for student information and four columns for intervention categories: RL.5.1, L.5.5b, RI.5.2, and L.5.4c. Each intervention column has a header with a student icon, ID, and a count of 1. The rows show data for Robert Deniro and Papa Smurf. Robert Deniro has a 27% score in RL.5.1. Papa Smurf has scores of 4% in L.5.5b, 0% in RI.5.2, and 11% in L.5.4c. The background features a teal and grey geometric design.

STUDENT		RL.5.1 C493 1	L.5.5b C487 1	RI.5.2 C514 1	L.5.4c C559 1
Robert Deniro	1	27%			
Papa Smurf	4		4%	0%	11%

Learn More: [ScootPad.com > Intervention](https://scootpad.com/intervention)

Data Driven Predictions

ScootPad uses data from the platform to predict what it takes for a student to master their curriculum. This also helps teachers prepare their instruction focusing on those concepts proven to be difficult for students to master.



Learn More: [ScootPad.com > Knowledge Heatmaps](https://scootpad.com/knowledge-heatmaps)

Virtual Support for Educators and Administrators

Getting
Started
Videos

How-To
Videos

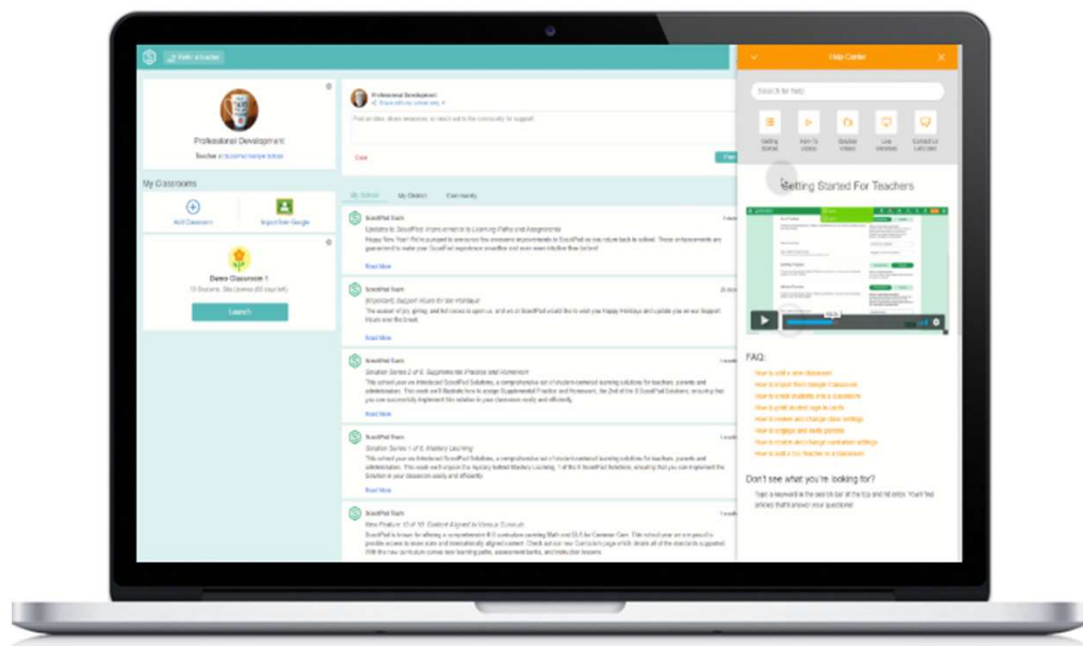
Solution
Videos

Live Webinars

Virtual
Bootcamp

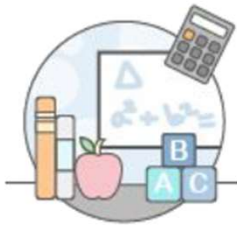
Customized
Workshops

Live Chat



Product Features

Built with focus on user experience, each feature is designed to engage and bring out the best in every student.



Subject

[Math](#)

[English \(ELA\)](#)

[Spelling](#)

[eBooks & Reading](#)

[Writing](#)

[Projects](#)



Mastery

[Adaptive Diagnostic](#)

[Adaptive Practices](#)

[Targeted Practices](#)

[Instructional Lessons](#)

[Assessments](#)

[Intervention](#)

[Insights & Data](#)

[Knowledge Heatmaps](#)



Engagement

[Growth Mindset](#)

[Coins & Rewards](#)

[Leaderboards](#)

[Behavior](#)

[Student Collaboration](#)

[Parent Engagement](#)



Administration

[Curriculum Design](#)

[User Management](#)

[License Management](#)

[Site-Wide Data and Reports](#)

[SSO and Roster Integration](#)

[Professional Development](#)

Learn More: ScootPad.com > Features

Comprehensive Adaptive Curriculum

1,000+ standards and textbook aligned adaptive learning paths.
Drag and drop standards from any K-8 grades to build your own custom learning paths!

Common Core & 13 State Standards Supported



Popular Textbooks & Assessments Supported



International Curriculum (UK):



Learn More: [ScootPad.com > Curriculum](https://www.scootpad.com/curriculum)

ACT COVID-19 Learning, Measurement & Navigation Resources:

<http://www.act.org/content/act/en/covid19.html>



ScootPad
Powered by **ACT**

**for Districts, Schools &
Classrooms:**

<https://www.scootpad.com/>



SimplyAdaptive
Powered by **ACT**

for Parents:

<https://simplyadaptive.com>

Julie Murphy | julie.murphy@act.org

